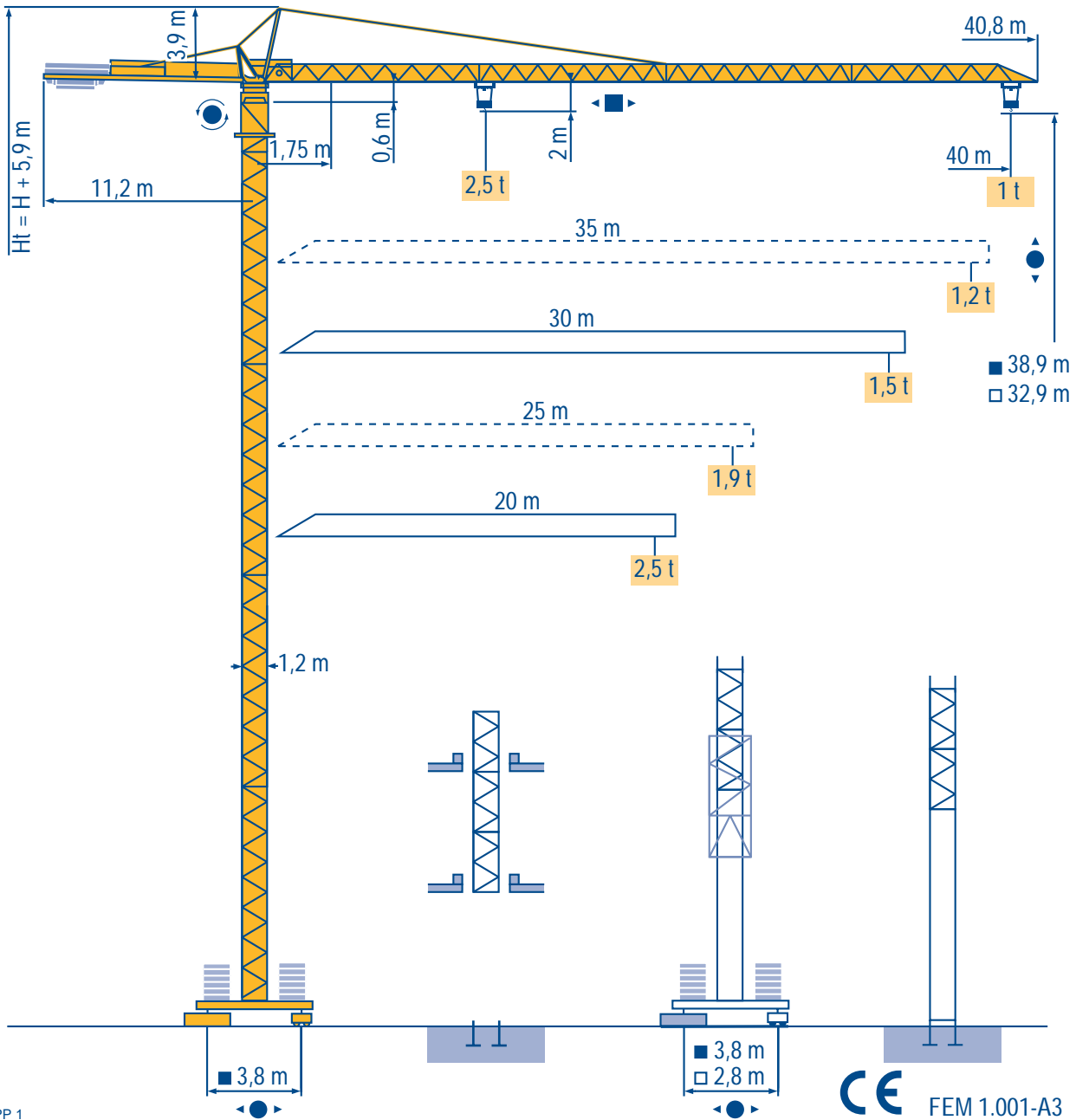


# CITY CRANE MC 50 A



HD



HDT



GTMR



CITY CRANE



TOPKIT MD



MR



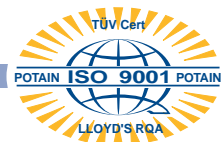
MAXI MD



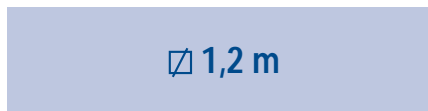
MAXI TOPKIT



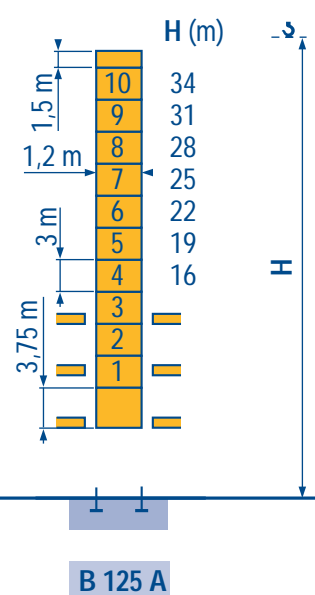
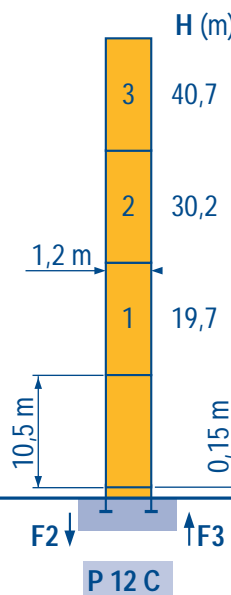
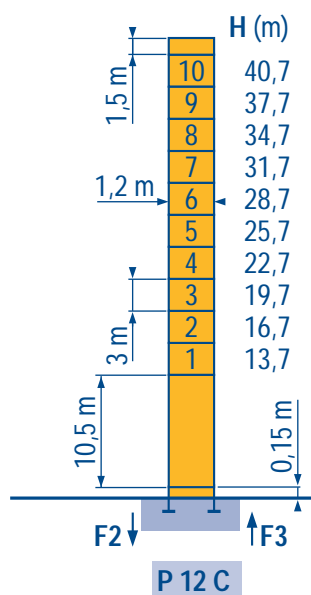
CE FEM 1.001-A3



**POTAIN**

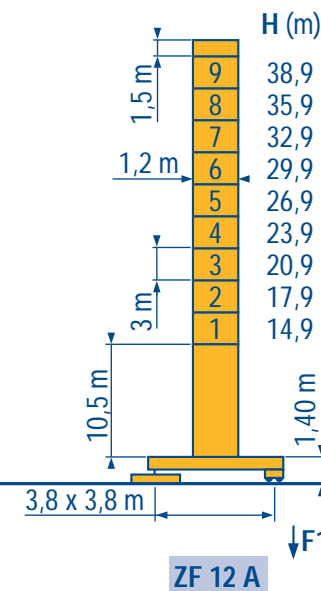
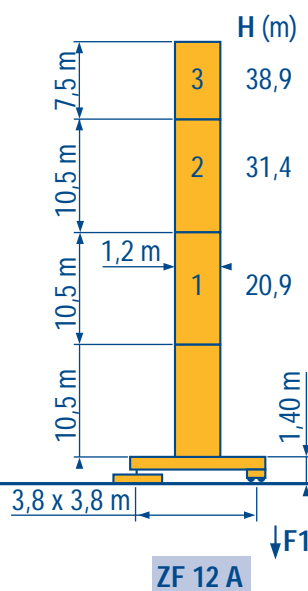
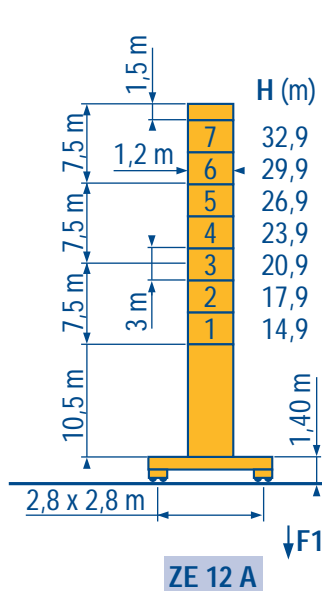


20 m → 40 m

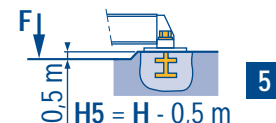
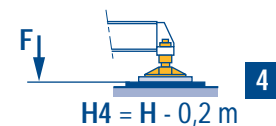
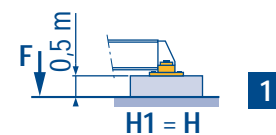


F2	● 61 t	■ 93 t
F3	● 49 t	■ 81 t
⚙️	15,5 t	

F2	● 61 t	■ 93 t
F3	● 49 t	■ 81 t
⚙️	15,5 t	



ZE - ZF



F1	● 40 t	■ 44 t
⚙️	18 t	

F1	● 38 t	■ 48 t
⚙️	20,5 t	

F1	● 38 t	■ 48 t
⚙️	20,5 t	

LPP 1

👁️ Voir télescopage sur dalles  
● Réactions en service  
■ Réactions hors service  
⚙️ A vide sans lest avec flèche et hauteur maximum.

Ⓡ See climbing crane  
Reactions in service  
Reactions out of service  
Without load and ballast with longest jib and maximum height.

Ⓢ Consultare gru in cavedio  
Reazioni in servizio  
Reazioni fuori servizio  
A vuoto senza zavorra e con braccio massimo e altezza massima.

👁️ Siehe Kletterkrane im Gebäude  
● Reaktionskräfte in Betrieb  
■ Reaktionskräfte außer Betrieb  
⚙️ Ohne Last und Ballast mit Maximalausleger und Maximalhöhe.

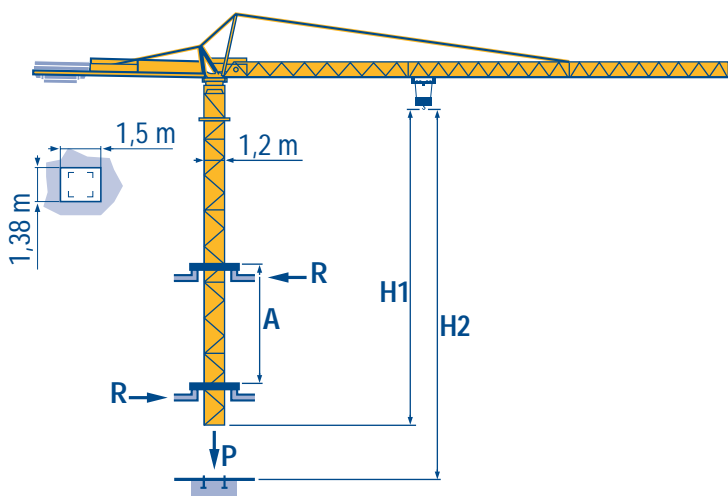
Ⓣ Vea grua trepadora  
Reacciones en servicio  
Reacciones fuera de servicio  
Sin carga, sin lastre con flecha y altura máxima.

Ⓤ 见楼板顶升  
工作状况下的反应  
非工作状况下的反应  
空载, 无配重, 起重臂和高度均为最大值

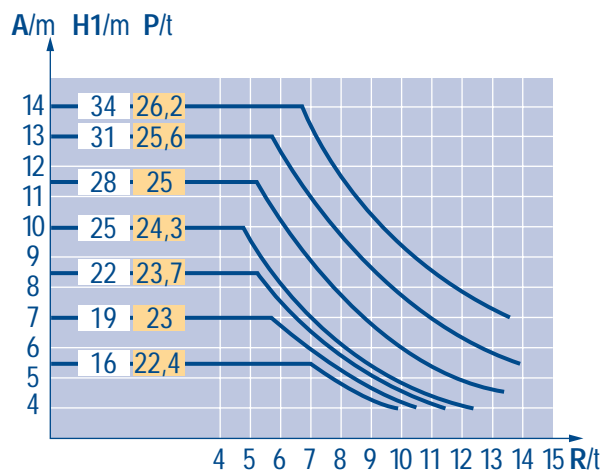
40 m	1,75 ▶	18,64	20	22	25	27	30	32	35	37	40 m
		2,5	2,31	2,07	1,78	1,63	1,43	1,32	1,19	1,1	1 t
35 m	1,75 ▶	18,84	20	22	25	27	30	32	35 m		
		2,5	2,34	2,09	1,8	1,65	1,45	1,34	1,2 t		
30 m	1,75 ▶	19,38	20	22	25	27	30 m				
		2,5	2,41	2,16	1,86	1,7	1,5 t				
25 m	1,75 ▶	19,72	20	22	25 m						
		2,5	2,46	2,2	1,9 t						
20 m	1,75 ▶		20 m								
			2,5 t								

LPP 1

B 125 A



LPP 1



A Distance entre cadres  
H1 Hauteur grue  
P Poids de la grue (en service)  
R Réaction horizontale

F

Distance between collars  
Crane height  
Crane weight (in service)  
Horizontal reaction

GB

Distanza fra i telai  
Altezza gru  
Peso della grue (in servizio)  
Reazione orizzontale

I

A Abstand zwischen den Rahmen  
H1 Kranhöhe  
P Krangewicht (in Betrieb)  
R Horizontalkräfte

D

Distancia entra marcos  
Altura grúa  
Peso de la grúa (en servicio)  
Reaccion horizontal

E

各附着框之间距离  
工作状态下塔机高度  
工作状态下塔机重量  
水平反力

C

					ch - PS hp	kW		
	15 PC 13	m/min	7	21	42	15	11	90 m > 90
		t	2,5	2,5	1,3			
	25 PC 13	m/min	7	36	72	25	18,4	193 m > 193
		t	2,5	2,5	1,3			
	3 D2 V5	m/min	21 - 42			3	2,2	
	RCV 40	tr/min U/min rpm	0 → 0,8			6	4,5	
	TVD 324 C1	m/min	26			2 x 4	2 x 2,9	

CEI 38	IEC 38	kVA	
400 V (+6% -10%) 50 Hz		15 PC : 25 kVA 25 PC : 35 kVA	84/534 - 87/405

LPP 1

	Levage		Hoisting		Sollevamento	
	Distribution		Trolleying		Distribuzione	
	Orientation		Slewing		Rotazione	
	Translation		Travelling		Traslazione	
	Conforme aux directives CEE 84/534 et 87/405 sur le niveau acoustique		In compliance with the EEC 84/534 and 87/405 Instructions on noise level		Conforme alle direttive CEE 84/534 e 87/405 sul livello acustico	
	Nous consulter		Consult us		Consultateci	
	Heben		Elevación		起升	
	Katzfahren		Distribución		变幅	
	Schwenken		Orientación		回转	
	Kranfahren		Traslación		行走	
	Gemäss EWG-Richtlinien 84/534 und 87/405 für den Schall-Leistungspegel		Conforme con las directivas CEE 84/534 y 87/405 sobre el nivel acustico		符合 CEE 84/534 - CEE 87/405 声晌度规定	
	Auf Anfrage		Consultarnos		请向我方咨询	

Ref. 1998.06 LPP 1



18.Rue de Charbonnières, B.P. 173-F  
69132 ECULLY Cedex  
Tél. (33)04.72.20.20.20  
Fax (33)04.72.20.20.00  
<http://www.potain.fr>  
E-mail : mkt@potain.fr

### CITY CRANE MC 50 A

Copyright.Reproduction interdite © POTAIN 1997

**Deutschland**  
POTAIN GmbH Tel : 06.105.704.0  
**Italia**  
POTAIN S.p.A Tel : 039.65.631  
**China**  
Zhangjiagang POTAIN Tel : 520. 877.1451