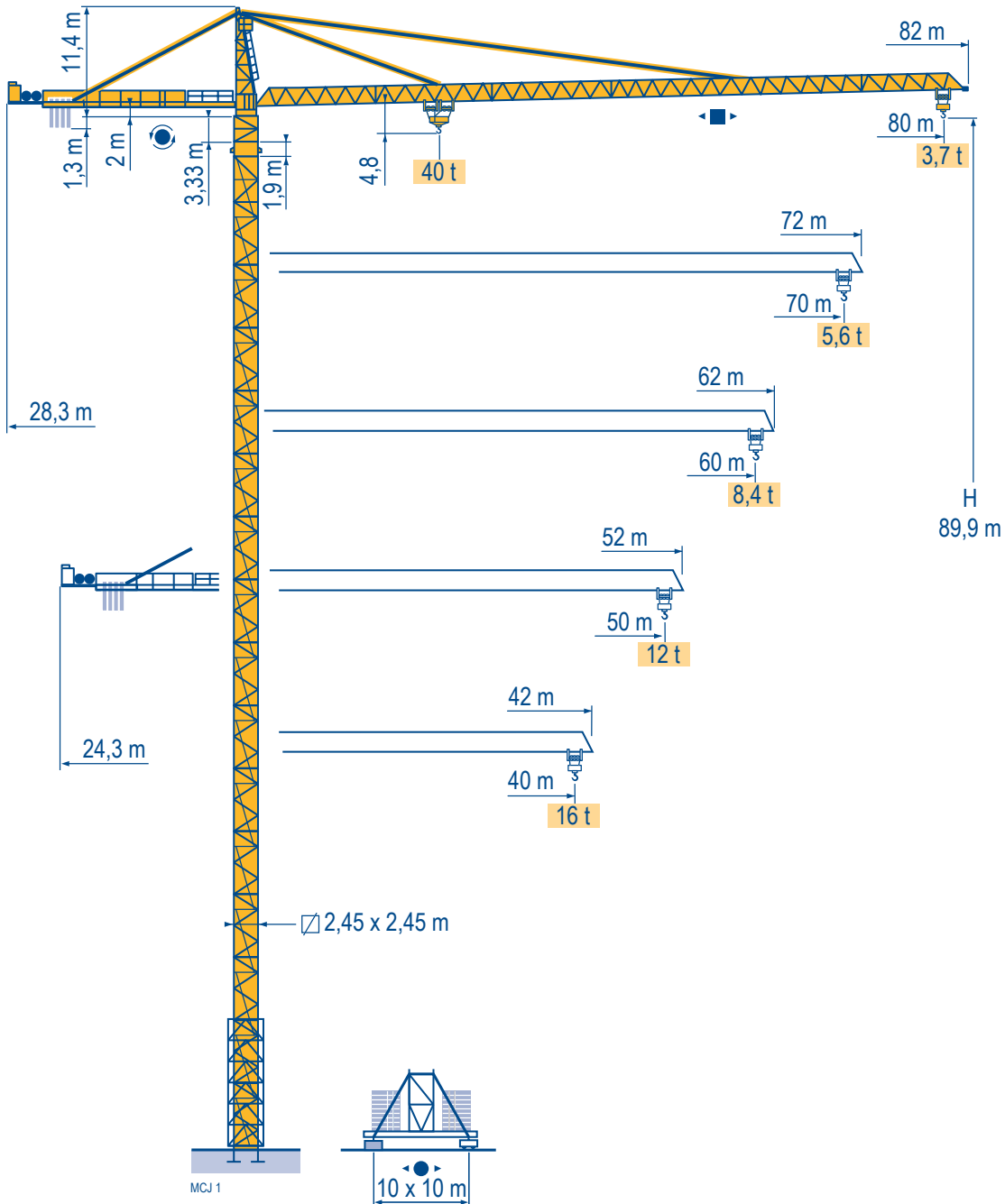


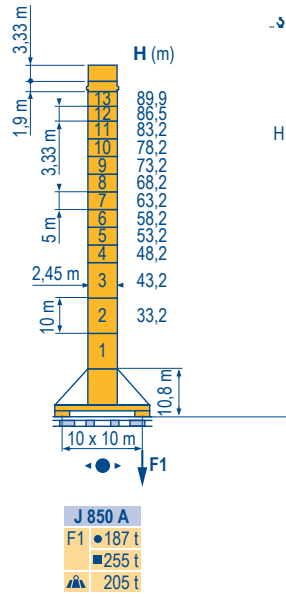
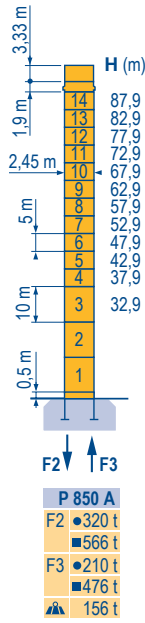
MD 560



Mat / Réactions \square 2,45 m x 2,45 m

Maste /
Eckdrücke
Masts /
Reactions
Mástil /
Reacciones
Torre / Reazioni
Tramo /
Reacções

MCJ1



Courbes de charges

Lastkurven

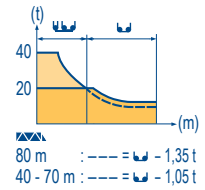
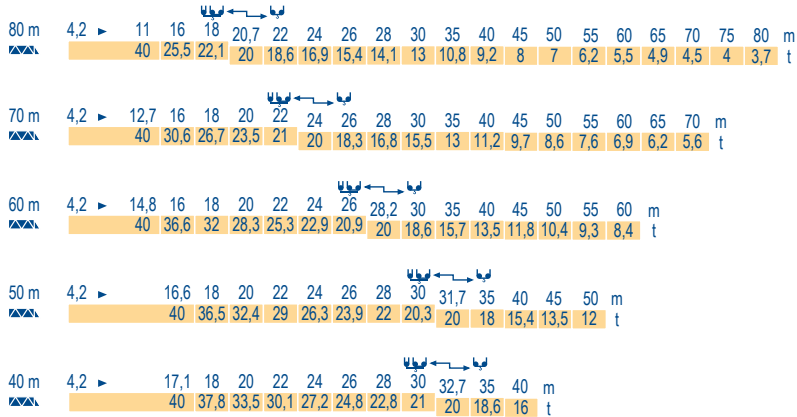
Load diagrams

Curvas de cargas

Curve di carico

Curva de cargas

MCJ1



MD 560

POTAIN

	F	D	GB	E	I	P
●	Réactions en service	Reaktionskräfte in Betrieb	Reactions in service	Reacciones en servicio	Reazioni in servizio	Reacções em serviço
■	Réactions hors service	Reaktionskräfte außer Betrieb	Reactions out of service	Reacciones fuera de servicio	Reazioni fuori servizio	Reacções fora de serviço
	A vide sans lest (ni train de transport) avec flèche et hauteur maximum.	Ohne Last, Ballast (und Transportachse), mit Maximalausleger und Maximalhöhe.	Without load, ballast (or transport axles), with maximum jib and maximum height.	Sin carga, sin lastre, (ni tren de transporte), flecha y altura máxima.	A vuoto, senza zavorra (ne assali di trasporto) con braccio massimo e altezza massima.	Sem carga (nem trem de transporte)- sem lastro com lança e altura máximas.
	Nous consulter	Auf Anfrage	Consult us	Consultarnos	Consultateci	Consultar-nos

Lest de contre-flèche
Gegenauslegerballast
Counter-jib ballast
Lastre de contra flecha
Contrappeso
Lastros da contra lança

MCJ 1

		4000 kg - 6000 kg	
		215 LBR 100	245 LBR 100
▲▲▲▲	▲▲▲▲	▲ (kg)	▲ (kg)
80 m	28,3 m	24 000	24 000
70 m	28,3 m	22 000	22 000
60 m	28,3 m	22 000	22 000
50 m	24,3 m	24 000	24 000
40 m	24,3 m	18 000	18 000




Lest de base - Grundballast
Base ballast - Lastre de base
Zavorra di base - Lastros da base

MCJ 1

□ 2,45 m	J850A	H (m)	89,9	86,5	83,2	78,2	73,2	68,2	63,2	58,2	53,2	48,2	43,2	33,2
		▲ (t)	180	156	132	108	72	60	60	60	60	60	60	60

Mécanismes
Antriebe
Mechanisms
Mecanismos
Meccanismi
Mecanismos

MCJ 2

MD 560 480 V 60 Hz										ch - PS hp	kW			
▲ ▼	215 LBR 100	m/min	3,8/38	6/60	9,6/96	15,2/152	1,9/19	3/30	4,8/48	7,6/76	215	158	580 m	
	t	20	12,05	7,05	3,9	40	24,1	14,1	7,8					
▲ ▼	245 LBR 100	m/min	4,4/44	6,8/68	10,8/108	17,2/172	2,2/22	3,4/34	5,4/54	8,6/86	245	180	650 m	
	t	20	12,3	7,2	4	40	24,4	14,3	8					
◀ ▶	15 DVF 16	m/min	0 → 50 (20 t) 0 → 67 (7,5 t) 0 → 100 (2,5 t)				0 → 33 (40 t) 0 → 67 (8,2 t) 0 → 100 (2,5 t)				15	11		
	R27	tr/min U/min rpm	0 → 0,7										3 x 9	3 x 6,6
J 850 A ▲ ▼		m/min	i											
		CEI 38		IEC 38				kVA						
		480 V (+6% -10%) 60 Hz						215 LBR : 240 kVA 245 LBR : 270 kVA						

MD 560

POTAIN 

	F	D	GB	E	I	P
	Levage	Heben	Hoisting	Elevación	Sollevamento	Elevação
	Distribution	Katzfahren	Trolleying	Distribución	Distribuzione	Distribuição
	Orientation	Schwenken	Slewing	Orientación	Rotazione	Rotação
	Translation	Kranfahren	Travelling	Traslación	Traslazione	Traslacção



Document commercial non contractuel. Pour toute information technique se référer à la notice correspondante.

Unverbindliches Vertriebsdokument. Für technische Informationen, siehe die entsprechenden Anweisungen.

This commercial document is not legally binding. For any technical information, please refer to the corresponding instructions.

Documento commercial no contractuel. Para cualquier información técnica, ver la noticia correspondiente.

Documento commerciale non vincolante, per tutte le informazioni tecniche fare riferimento al catalogo istruzioni.

Documento comercial não contratual. Para qualquer informação técnica complementar consultar as respectivas instruções.



Americas

Tel : +1 888 479 7278
Tel : +1 717 593 2000

Europe – Middle East – Africa

Tel : +33 (0) 4 72 81 50 00
Tel : +44 (0) 191 522 2000

Asia – Pacific

Tel : +65 6264 1188
Fax : +65 6862 4142

www.manitowoccrane.com

18, rue de Charbonnières - B.R.173
69132 ECULLY Cedex - France

Tél. : +33 (0) 4 72 18 20 20

Fax. : +33 (0) 4 72 18 20 00

www.manitowoccrane.com

MD 560

Réf. 2004 52 MCJ 2

Copyright.Reproduction interdite © POTAIN 2004