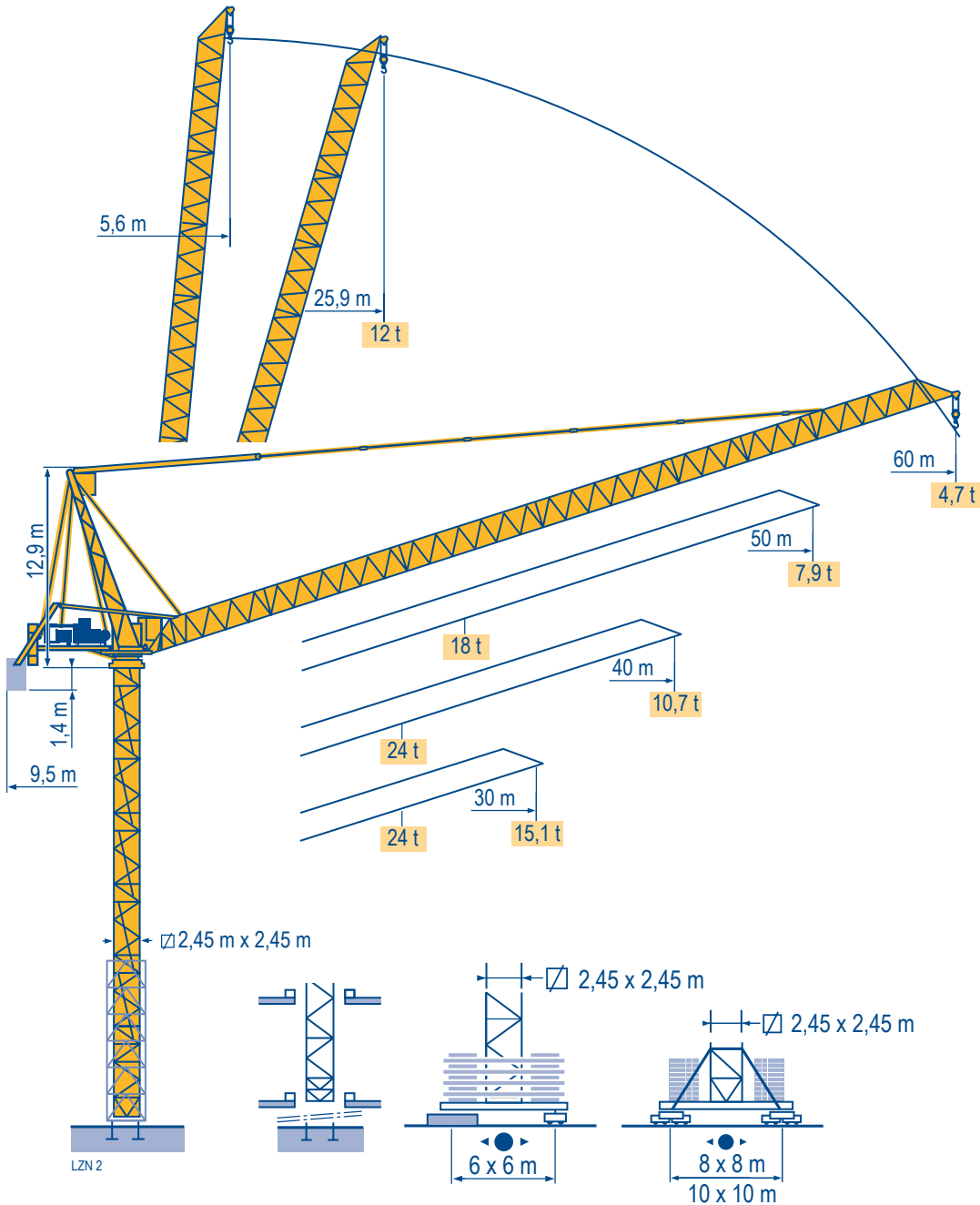
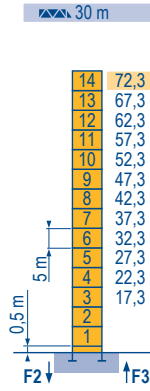


# MR 405 B H24



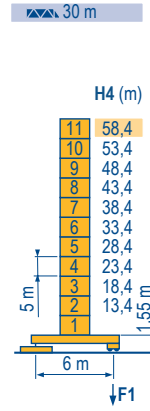
Mat / Réactions  $\square$  2,45 m  
 Maste /  
 Eckdrücke 30 m  $\Rightarrow$  60 m  
 Masts /  
 Reactions  
 Mástil /  
 Reacciones  
 Torre / Reazioni  
 Tramo /  
 Reacções

LZN 3



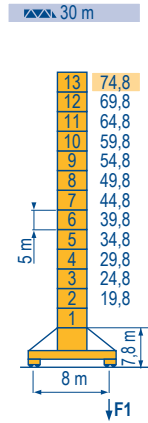
H (m)	5 m	3,33 m
30 m	14	-
40 m	12	2
50 m	11	2
60 m	10	2

**P 800 A**  
 F2 ● 227 t  
 ■ 360 t  
 F3 ● 153 t  
 ■ 292 t  
 ▲ 104 t



H4 (m)	H3 (m)	5 m	3,33 m
30 m	58,4	11	-
40 m	53,4	10	-
50 m	48,4	9	1
60 m	43,4	8	2

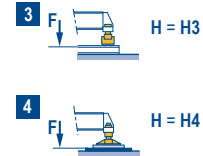
**ZX 6830**  
 F1 ● 147 t  
 ■ 177 t  
 ▲ 106 t



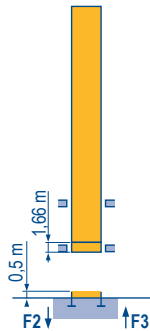
H (m)	5 m	3,33 m
30 m	13	-
40 m	12	-
50 m	10	2
60 m	9	2

**Y 800 A**  
 F1 ● 160 t  
 ■ 202 t  
 ▲ 138 t

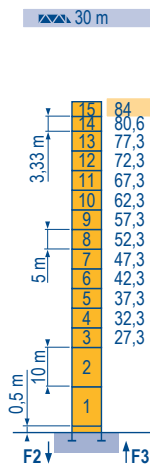
**ZX 6830**



$\square$  2,45 m  
 $\square$  30 m  $\Rightarrow$  60 m

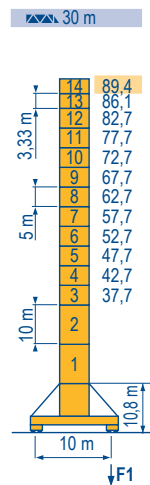


**B 800 B**  
 i



H (m)	10 m	5 m	3,33 m
30 m	2	11	2
40 m	2	11	1
50 m	2	10	1
60 m	2	9	1

**P 850 A**  
 F2 ● 274 t  
 ■ 505 t  
 F3 ● 184 t  
 ■ 423 t  
 ▲ 120 t



H (m)	10 m	5 m	3,33 m
30 m	2	10	2
40 m	2	10	1
50 m	2	10	1
60 m	2	8	2

**J 850 A**  
 F1 ● 172 t  
 ■ 252 t  
 ▲ 173 t



**MR 405 B H24**



F	D	GB	E	I	P
● Réactions en service	● Reaktionskräfte in Betrieb	● Reactions in service	● Reacciones en servicio	● Reazioni in servizio	● Reacções em serviço
■ Réactions hors service	■ Reaktionskräfte außer Betrieb	■ Reactions out of service	■ Reacciones fuera de servicio	■ Reazioni fuori servizio	■ Reacções fora de serviço
▲ A vide sans lest (ni train de transport) avec flèche et hauteur maximum.	▲ Ohne Last, Ballast (und Transportachse), mit Maximalausleger und Maximalhöhe.	▲ Without load, ballast (or transport axles), with maximum jib and maximum height.	▲ Sin carga, sin lastre, (ni tren de transporte), flecha y altura máxima.	▲ A vuoto, senza zavorra (ne assali di trasporto) con braccio massimo e altezza massima.	▲ Sem carga (nem trem de transporte)- sem lastro com lança e altura máximas.
i Nous consulter	i Auf Anfrage	i Consult us	i Consultarnos	i Consultateci	i Consultar-nos



Mécanismes  
Antriebe  
Mechanisms  
Mecanismos  
Meccanismi  
Mecanismos

LZN 3

MR 405 B H24 - 50 Hz											ch - PS hp	kW			
	90 LBR 60 L910	m/min	2,8/28	4,4/44	7/70	11/111	1,4/14	2,2/22	3,5/35	5,5/55	90	66	910 m		
		t	12	7,3	4,2	2,25	24	14,6	8,4	4,5					
	62 VBR	tr/min U/min - rpm	2 min 48 s										62	45	
		R - 8,8	m/min	0 → 0,67										2 x 6	2 x 4,4
	Y 800 A RT584 A1 - 2V	m/min	13,5 - 27										8 x 7	8 x 5,2	
		J 850 A													
	ZX 6830 RT 664 A2B - 2V	m/min	16 - 32										6 x 7	6 x 5,2	
		CEI 38	IEC 38	400 V (+6% -10%)		<b>kVA</b>	170 kVA								

MR 405 B H24 - 60 Hz											ch - PS hp	kW			
	108 LBR 60 L910	m/min	3,3/33	5,3/53	8,4/84	13,3/133	1,6/16,5	2,7/26,5	4,2/42	6,7/67	108	79	910 m		
		t	12	7,4	4,2	2,25	24	14,8	8,4	4,5					
	74 VBR	tr/min U/min - rpm	2 min 20 s										74	54	
		R - 10,5	m/min	0 → 0,8										2 x 7,2	2 x 5,3
	Y 800 A RT584 A1 - 2V	m/min	16 - 32										8 x 8,4	8 x 6,2	
		J 850 A													
	ZX 6830 RT 664 A2B - 2V	m/min	19 - 38										6 x 8,4	6 x 6,2	
		CEI 38	IEC 38	480 V (+6% -10%)		<b>kVA</b>	205 kVA								

	<b>F</b>	<b>D</b>	<b>GB</b>	<b>E</b>	<b>I</b>	<b>P</b>
	Levage	Heben	Hoisting	Elevación	Sollevamento	Elevação
	Relevage	Ausleger-Einziehen	Luffing	Elevación de flecha	Brandeggio	Inclinação da lança
	Orientation	Schwenken	Slewing	Orientación	Rotazione	Rotação
	Translation	Kranfahren	Travelling	Traslación	Traslazione	Translação

Document commercial non contractuel. Pour toute information technique se référer à la notice correspondante. Unverbindliches Vertriebsdokument. Für technische Informationen, siehe die entsprechenden Anweisungen. This commercial document is not legally binding. For any technical information, please refer to the corresponding instructions. Documento comercial no contractuel. Para cualquier información técnica, ver la noticia correspondiente. Documento commerciale non vincolante, per tutte le informazioni tecniche fare riferimento al catalogo istruzioni. Documento comercial não contratual. Para qualquer informação técnica complementar consultar as respectivas instruções.



**Americas**  
Tel : +1 888 479 7278  
Tel : +1 717 593 2000

**Europe - Middle East - Africa**  
Tel : +33 (0) 4 72 81 50 00  
Tel : +44 (0) 191 522 2000

**Asia - Pacific**  
Tel : +65 6264 1188  
Fax : +65 6862 4040

www.manitowoccrane.com

**18, rue de Charbonnières - B.R.173**  
**69132 ECULLY Cedex - France**  
Tél. : +33 (0) 4 72 18 20 20  
Fax. : +33 (0) 4 72 18 20 00  
www.manitowoccrane.com

**MR 405 B H24**  
Code J-91985-82\_Réf. 2003 48 LZN 4

Copyright.Reproduction interdite © POTAIN 2003

Réalisation Sedoc