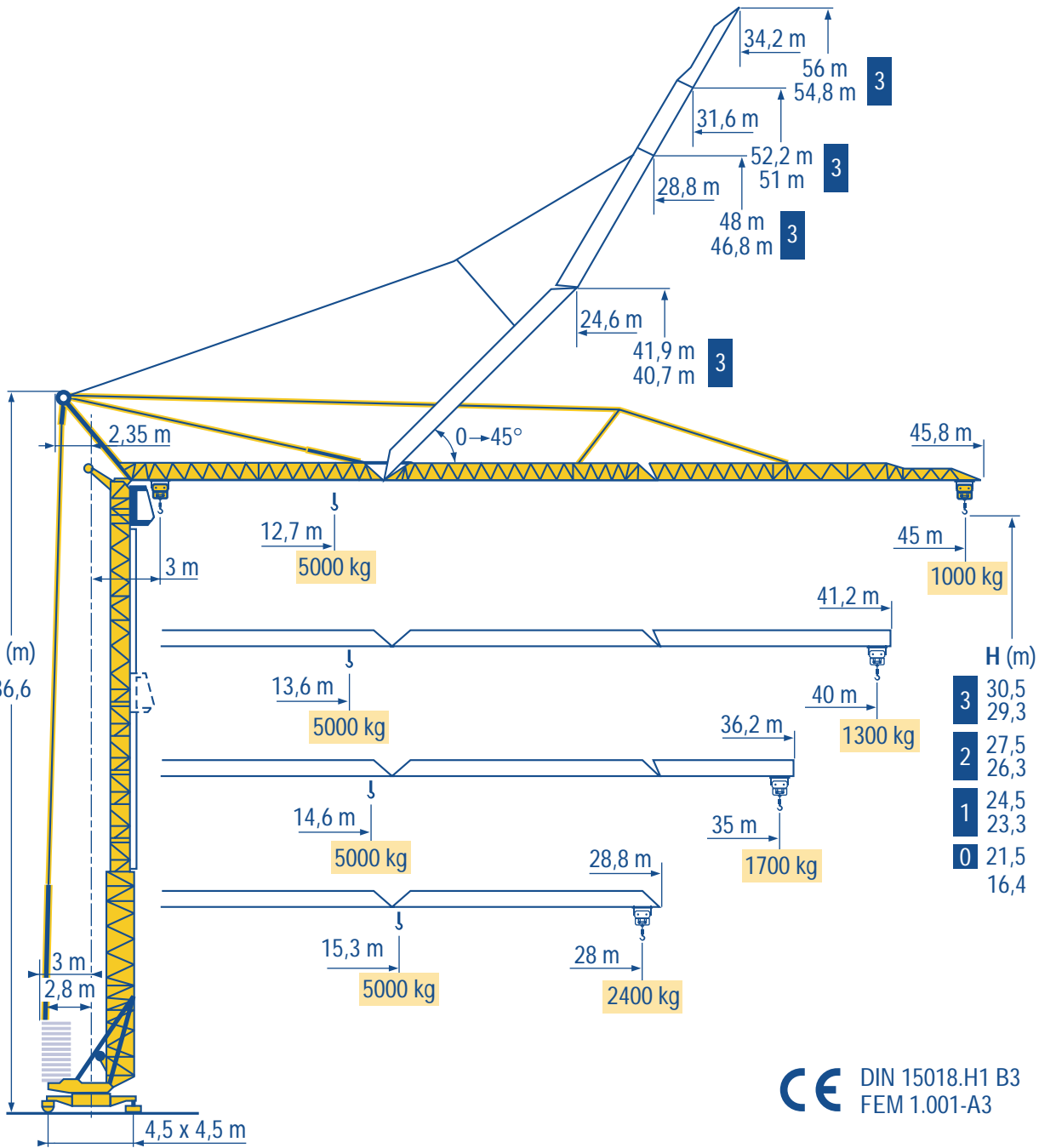


GTMR 346 A



HD
HDM



HDT



GTMR



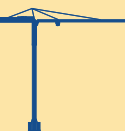
CITY CRANE



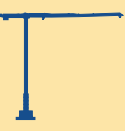
TOPKIT MD
MAXI MD



MAXI TOPKIT



Topless MDT



MR

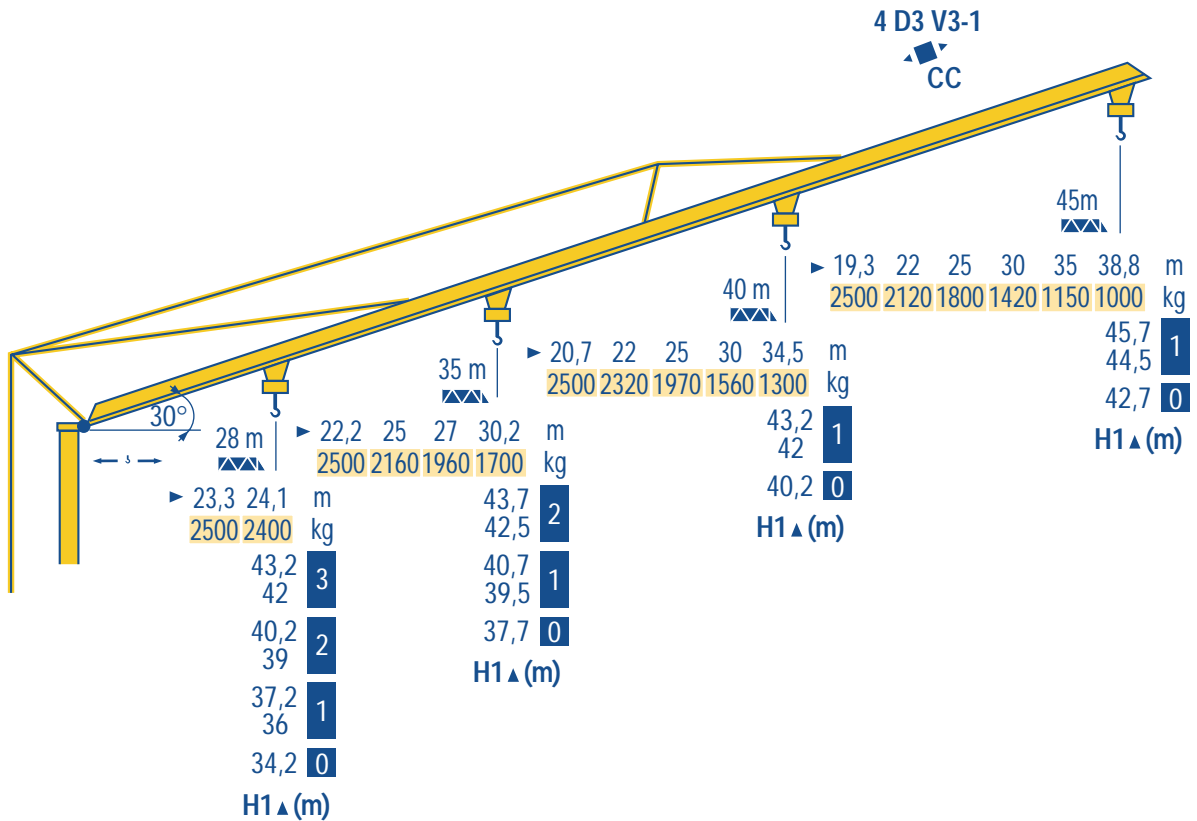


CE DIN 15018.H1 B3
FEM 1.001-A3



45 m	3 ▶	12,7	15	17	19	20	23	25	27	30	33	35	37	40	43	45	m
▲▲▲		5000	4070	3480	3040	2850	2390	2160	1960	1710	1520	1400	1300	1180	1070	1000	kg
40 m	3 ▶	13,6	15	17	19	20	23	25	27	30	33	35	37	40			m
▲▲▲		5000	4440	3800	3320	3110	2620	2360	2150	1880	1670	1550	1440	1300			kg
35 m	3 ▶	14,6	15	17	19	20	23	25	27	30	33	35					m
▲▲▲		5000	4830	4140	3610	3390	2860	2580	2350	2060	1830	1700					kg
28 m	3 ▶		15,3	17	19	20	23	25	27	28							m
▲▲▲			5000	4400	3850	3610	3050	2760	2510	2400							kg

LMS 1



LMS 2



Chariot distributeur
et courbes de charges

Traversing trolley
and load diagrams

Carrellino distributore
e curve di carico



Verfahrbare laufkatze
und lastkurven

Carro distribuidor
y curvas de cargas

变副滑车和
负荷曲线

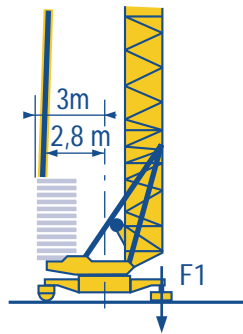
Réactions
Eckdrücke



Reactions
Reacciones



Reazioni
反力



F1 ● 32 t ■ 24,5 t
▲ 19,2 t

LMS 1

- Réactions en service
 - Réactions hors service
 - ▲ A vide sans lest (ni train de transport) avec flèche et hauteur maximum.
- Reaktionskräfte in Betrieb
 - Reaktionskräfte außer Betrieb
 - ▲ Ohne Last, Ballast (und Transportachse), mit Maximalausleger und Maximalhöhe.

- Reactions in service
 - Reactions out of service
 - ▲ Without load, ballast (or transport axles), with maximum jib and maximum height.
- Reacciones en servicio
 - Reacciones fuera de servicio
 - ▲ Sin carga, sin lastre, (ni tren de transporte), flecha y altura máxima.

- Reazioni in servizio
 - Reazioni fuori servizio
 - ▲ A vuoto, senza zavorra (ne assali di trasporto) con braccio massimo e altezza massima.
- 工作状态下的反应
 - 非工作状态下的反应
 - ▲ 空载无压重也无运输车有吊臂和最大高度

Mécanismes
Antriebe



Mechanisms
Mecanismos



Meccanismi
机构



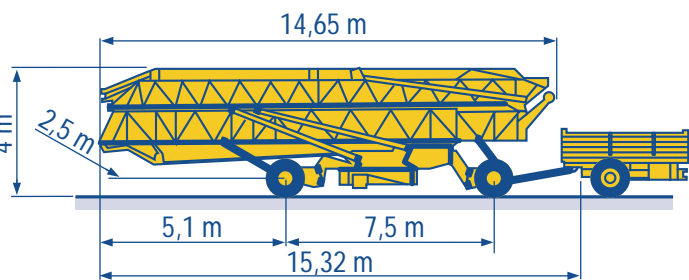
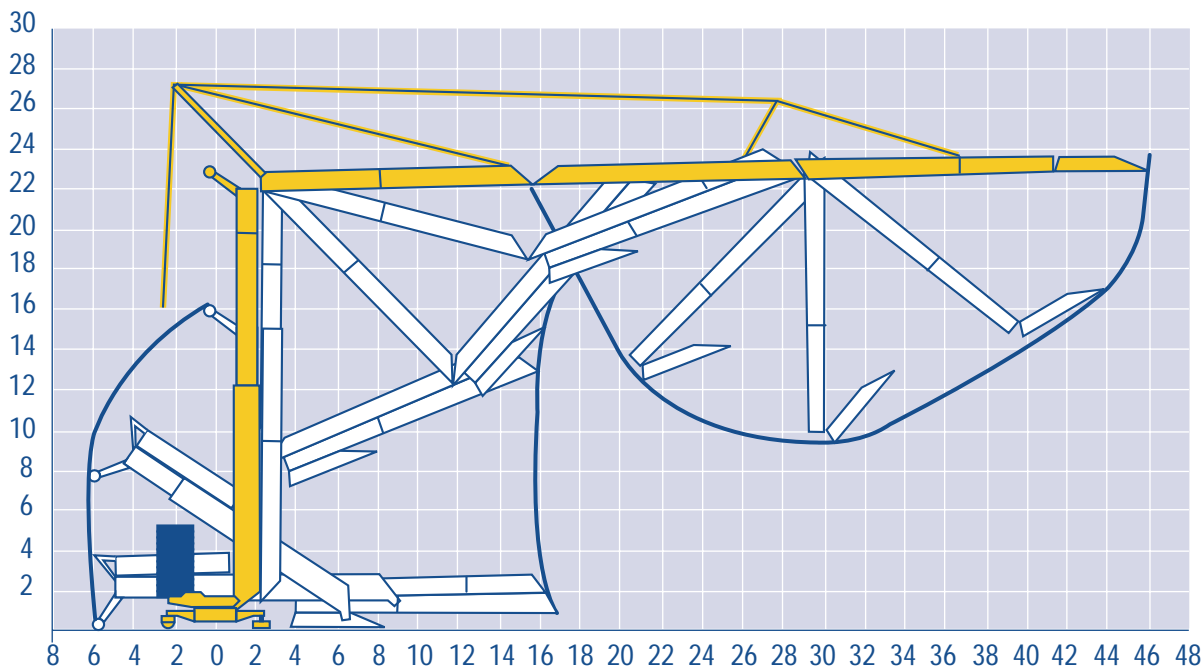
								ch - PS hp	kW	
	20 TDPC 12	m/min	9	27,5	55	4,5	13,7	27,5	20	15
		Kg	2500	2500	1500	5000	5000	3000		
	20 LVF 12	m/min	5,5	27,5	55	2,7	13,7	27,5	20	15
		Kg	2500	2500	1500	5000	5000	3000		
	4 D3 V3-1	m/min	15 - 30 - 58						4	3
	RCV 51	tr/min U/min rpm	0 → 0,8						6	4,4
	TDV 324	m/min	25						2 x 4	2 x 3
	TB 124	m/min	25						2 x 4	2 x 3
CEI 38 IEC 38		KVA								
400 V (+6% -10%) 50 Hz		30 kVA						84/534 - 87/405		

LMS 1

- Levage
 - Distribution
 - Orientation
 - Translation
 - ▲ Conforme aux directives CEE 84/534 et 87/405 sur le niveau acoustique
- Heben
 - Katzfahren
 - Schwenken
 - Kranfahren
 - ▲ Gemäss EWG-Richtlinien 84/534 und 87/405 für den Schall-Leistungspegel

- Hoisting
 - Trolleying
 - Slewing
 - Travelling
 - ▲ In compliance with the EEC 84/534 and 87/405 Instructions on noise level
- Elevación
 - Distribución
 - Orientación
 - Traslación
 - ▲ Conforme con las directivas CEE 84/534 y 87/405 sobre el nivel acustico

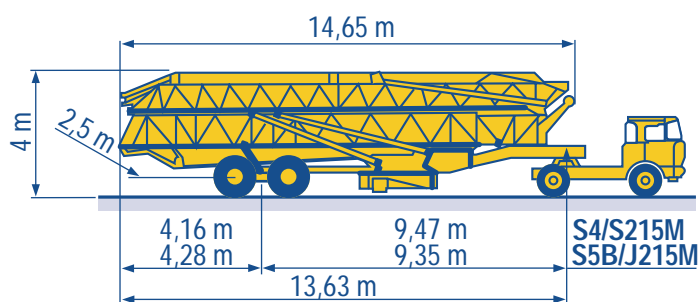
- Sollevamento
 - Ditrribuzione
 - Rotazione
 - Traslazione
 - ▲ Conforme alle direttive CEE 84/534 e 87/405 sul livello acustico
- 起升
 - 变幅
 - 回转
 - 行走
 - ▲ 符合 CEE 84/534 - CEE 87/405 声响度规定



15A/25A

DJ126M/S215M

CJ125M/J215M



S4/S215M
S5B/J215M

S4/S215M

S5B/J215M



18.Rue de Charbonnières, B.P. 173
F-69132 ECULLY Cedex
Tél. (33)04.72.18.20.20
Fax (33)04.72.18.20.00
<http://www.potain.com>
E-mail : mkt@potain.fr

GTMR 346 A

Copyright.Reproduction interdite © POTAIN 1997

Deutschland
POTAIN GmbH Tel : 06.105.704.0

Italia
POTAIN S.p.A. Tel : 0.331.49.33.11

Singapore
POTAIN PTE LTD Tel : (00.65) 227.1550