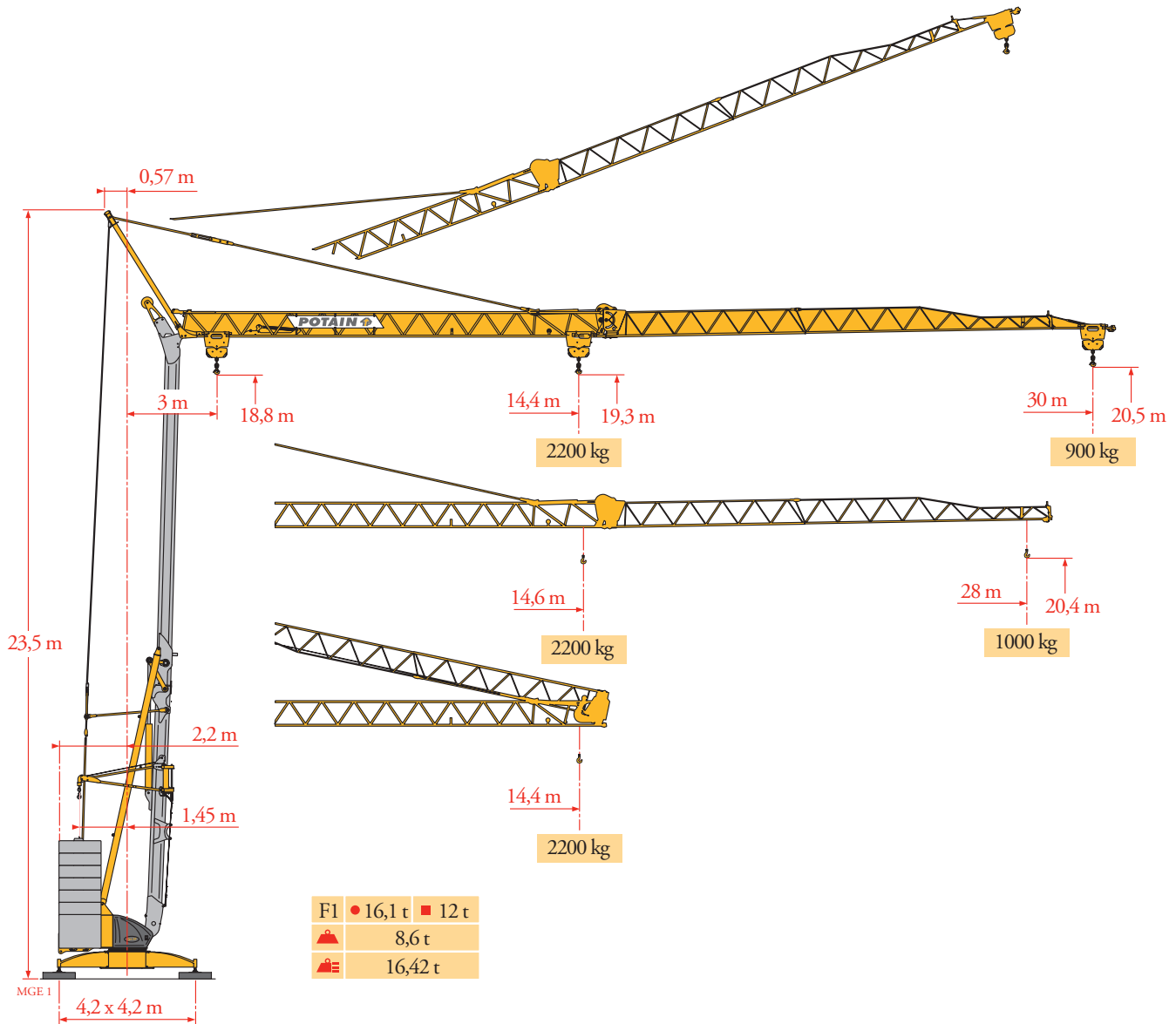
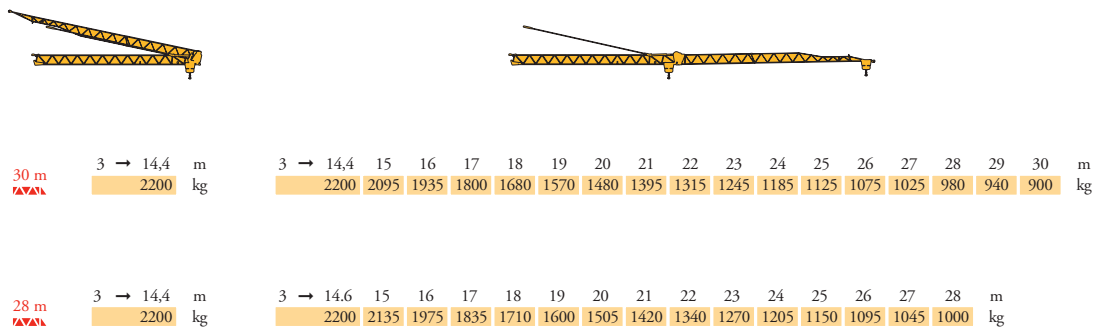


Provisional*
Provisorio* / Provisoire*

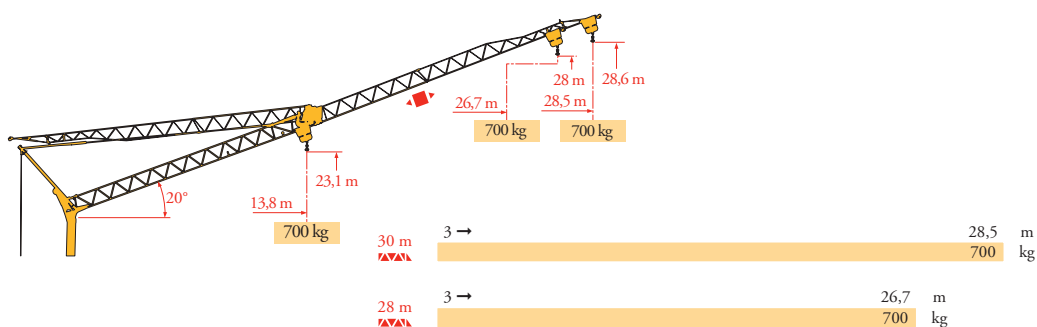
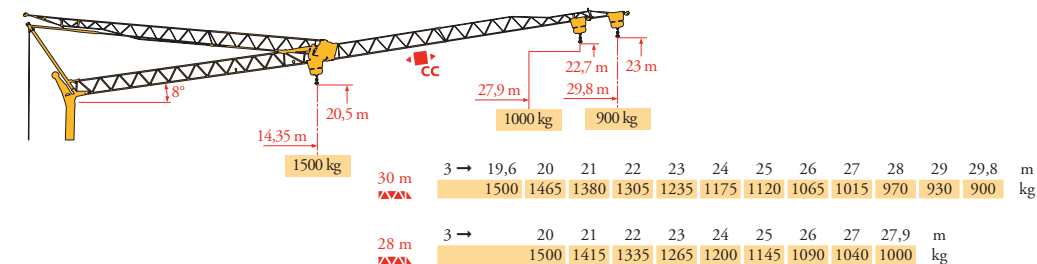
Potain Igo 30



Courbes de charges
 Lastkurven
 Load diagrams
 Curvas de cargas
 Curve di carico
 Curva de cargas
 Диаграммы грузоподъемностей







Flèche relevée
 Ausleger in Steilstellung
 Luffing jib
 Flecha izada
 Braccio impennato
 Lança inclinada
 Маховая стрела

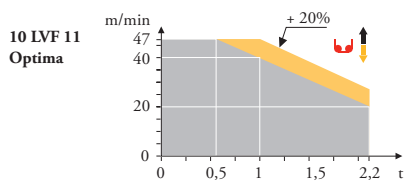


- FR**
 Chariot distributeur
 Chariot distributeur et courbes de charges
 Réactions en service
 Réactions hors service
 A vide sans lest (ni train de transport) avec flèche et hauteur maximum
 Poids total du lest
- DE**
 Verfahrbare Laufkatze
 Verfahrbare Laufkatze und Lastkurven
 Reaktionskräfte in Betrieb
 Reaktionskräfte außer Betrieb
 Ohne Last, Ballast (und Transportachse), mit Maximalausleger und Maximalhöhe
 Ballast-Gesamtgewicht
- EN**
 Traversing trolley
 Traversing trolley and load diagrams
 Reactions in service
 Reactions out of service
 Without load, ballast (or transport axes), with maximum jib and maximum height
 Gross ballast weight
- ES**
 Carro distribuidor
 Carro distribuidor y curvas de cargas
 Reacciones en servicio
 Reacciones fuera de servicio
 Sin carga, sin lastre, (ni tren de transporte), flecha y altura máxima
 Peso total del lastre
- IT**
 Carrellino distributore
 Carrellino distributore e curve di carico
 Reazioni in servizio
 Reazioni fuori servizio
 A vuoto, senza zavorra (ne assali di trasporto) con braccio massimo e altezza massima
 Peso totale della zavorra
- PT**
 Carro distribuidor
 Carro distribuidor e curva de cargas
 Reações em serviço
 Reações fora de serviço
 Sem carga (nem trem de transporte) - sem lastro com lança e altura máximas
 Peso total do lastro
- RU**
 Грузовая тележка
 Грузовая тележка и диаграммы грузоподъемностей
 Реакции при работе
 Реакции в покое
 Вес без груза, балласта (или транспортных осей), с максимальной длиной стрелы и максимальной высотой
 общий вес груза

Mécanismes
Antriebe
Mechanisms
Mecanismos
Meccanismi
Mecanismos
Механизмы

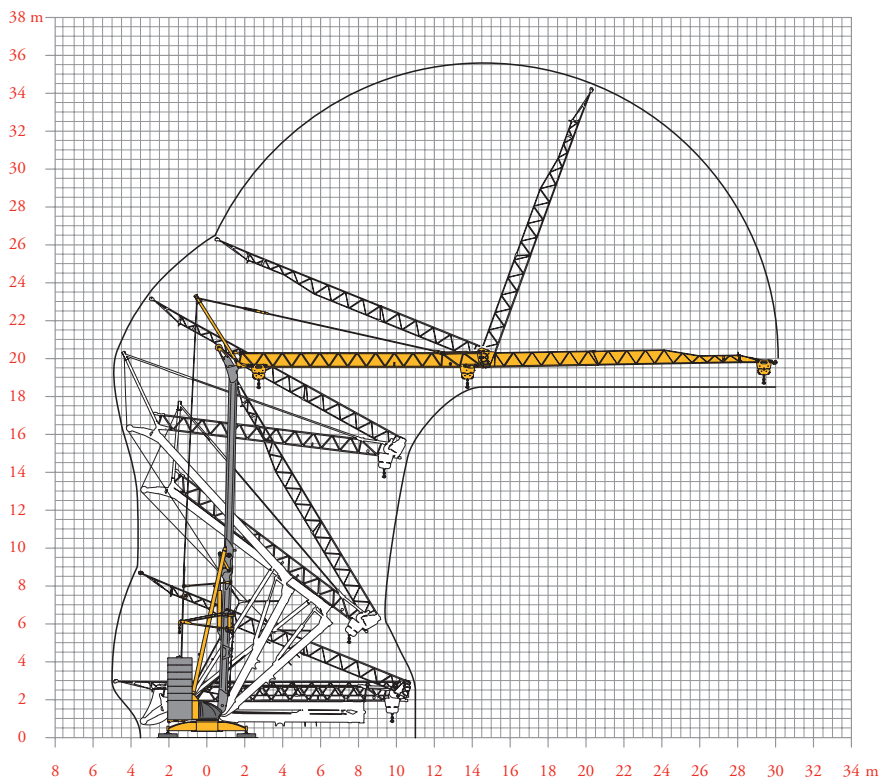
MGE 1

							ch - PS - hp	kW	
	10 LVF 11 Optima	m/min	3,5	12	20	40	47	10	7,5
		kg	2200	2200	2200	1000	600		
	2 DVF 4	m/min	15-30		15-30-40	15-30-47		2	1,5
		kg	900 → 2200		100 → 900	0 → 100			
	RVF 31 Optima+	tr/min - U/min - rpm	0 → 0,8					2	1,5
CEI 38 			IEC 38			kVA			
400 V (+6% -10%) / 50 - 60 Hz 480 V (+6% -10%) / 60 Hz						400 V : 14 kVA 480 V : 14 kVA			



Montage
Montage
Erection
Montaje
Montaggio
Montagem
Монтаж

MGE 1



FR

Levage
Distribution
Orientation

DE

Heben
Katzfahren
Schwenken

EN

Hoisting
Trolleying
Slewing

ES

Elevación
Distribución
Orientación

IT

Sollevamento
Distribuzione
Rotazione

PT

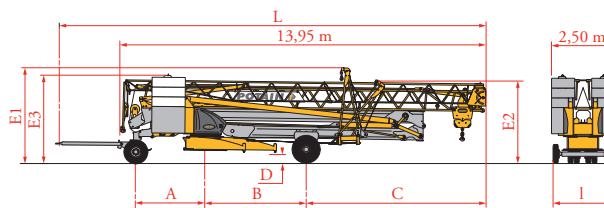
Elevação
Distribuição
Rotação

RU

Подъем
Перемещение каретки
Поворот

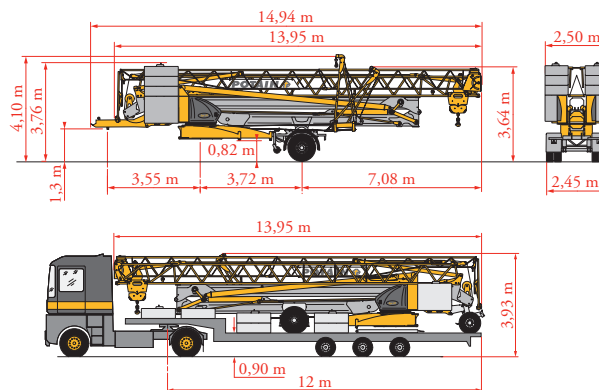
Transport
 Transport
 Transport
 Transporte
 Transporte
 Транспортировка

	Km/h
DS61/S80	10
DS61/S120	10
DJ80/S120	10
DJ100/S120	10
DS61/S125 (D)	25
DJ80/S125 (D)	25
DJ105/S125 (D)	25
DJ126M/S125(D)	25



	A (m)	B (m)	C (m)	D (m)	E1 (m)	E2 (m)	E3 (m)	L (m)	I (m)
DS61/S80	2,65	3,72	7,06	0,36	3,64	3,2	-	16,39	1,82
DS61/S120	2,65	3,72	7,06	0,36/0,21	3,66/3,51	3,2/3,05	-	16,39	2,4
DJ80/S120	2,65	3,72	7,06	0,36/0,21	3,66/3,51	3,2/3,05	-	16,39	2,4
DJ100/S120	2,65	3,72	7,06	0,36/0,21	3,66/3,51	3,2/3,05	-	16,39	2,4
DS61/S125 (D)	2,65	3,72	7,06	0,36/0,21	3,66/3,51	3,2/3,05	-	16,39	2,4
DJ80/S125 (D)	2,65	3,72	7,06	0,36/0,21	3,66/3,51	3,2/3,05	-	16,39	2,4
DJ105/S125 (D)	2,65	3,72	7,06	0,36/0,21	3,66/3,51	3,2/3,05	-	16,39	2,4
DJ126M/S125(D)	2,65	3,72	7,06	0,36/0,21	3,66	3,2	3,32	16,53	2,4

	Km/h
SL121J135	25



* Document commercial non contractuel. Pour toute information technique se référer à la notice correspondante.

* Unverbindliches Vertriebsdokument. Für technische Informationen, siehe die entsprechenden Anweisungen.

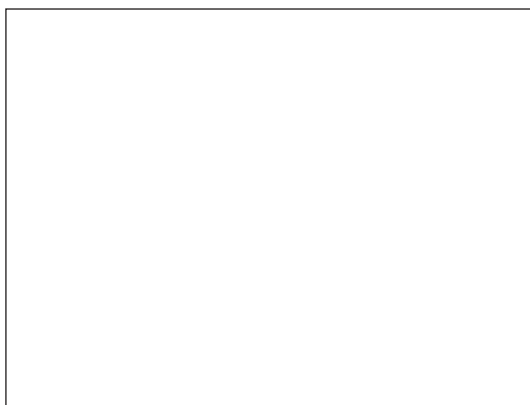
* This commercial document is not legally binding. For any technical information, please refer to the corresponding instructions.

* Documento comercial no contractual. Para cualquier información técnica, ver la noticia correspondiente.

* Documento commerciale non vincolante, per tutte le informazioni tecniche fare riferimento al catalogo istruzioni.

* Documento comercial não contratual. Para qualquer informação técnica complementar consultar as respectivas instruções.

* Этот коммерческий документ не является юридически обязательным. Для получения технической информации, см. соответствующие инструкции.



Manitowoc - Americas - World Headquarters
 2400 S. 44th Street • Manitowoc • WI 54220 USA
 Tel: +1 920 684 4410 • Fax: +1 920 652 9778

Manitowoc - Europe, Middle East & Africa
 Manitowoc France SAS
 18, rue de Charbonnières B.P. 173 • 69132 ECULLY Cedex • FRANCE
 Tel: +33 (0)4 72 18 20 20 • Fax: +33 (0)4 72 18 20 00

Manitowoc - Asia Pacific
 16F Xu Hui Yuan Building,
 1089 Zhongshan No.2 Road (S) • Shanghai 200030 China
 Tel: +86 21 6457 0066 • Fax: +86 21 6457 4955