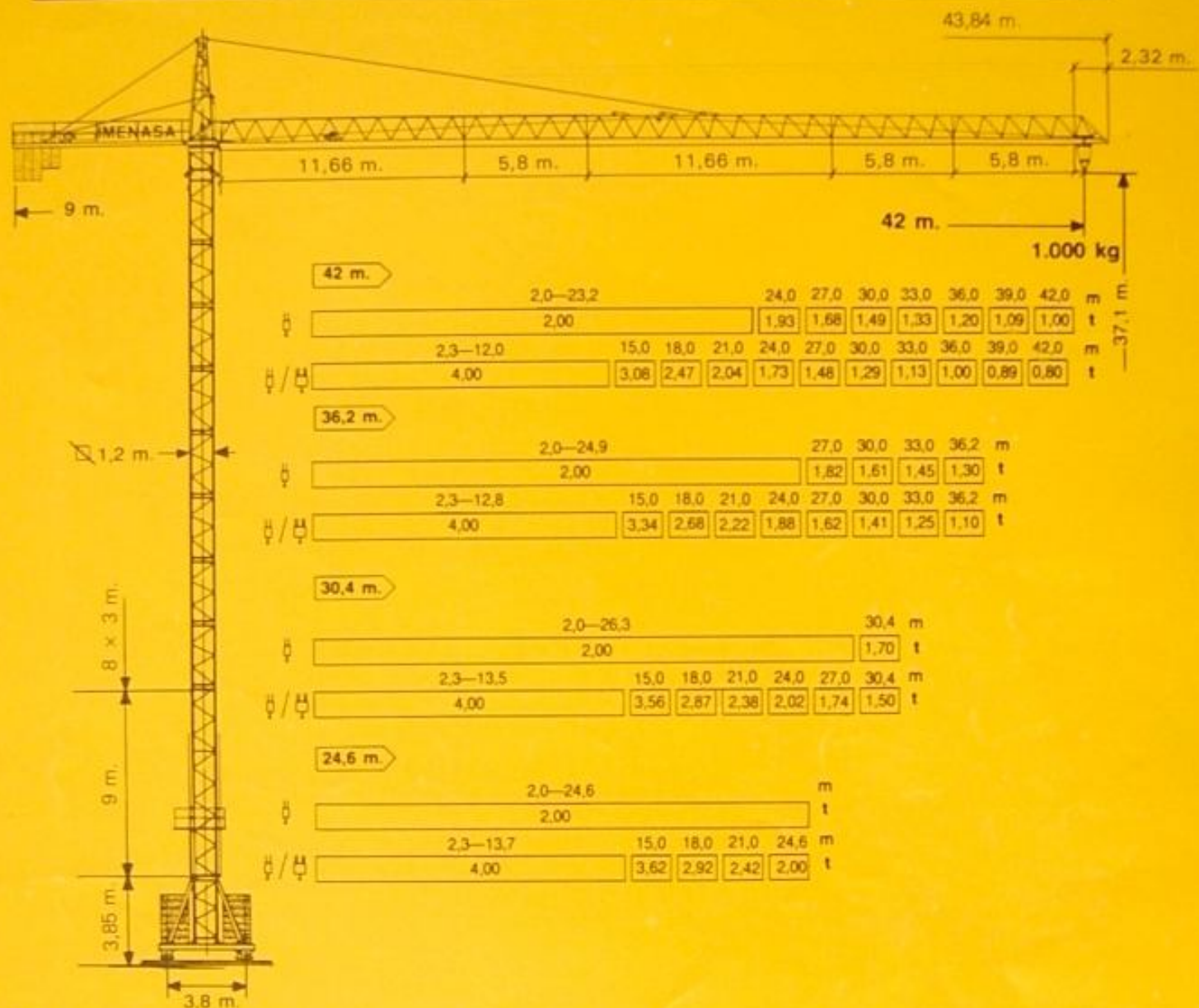


GRUA TORRE TOWER CRANE

42 NC



Altura bajo gancho – Hoisting height







VERSION VERSIONS	I MOVIL VIA RECTA MOBILE	II FIJA STATIONARY ON UNDERCARRIAGE	III ESTACIONARIA STATIONARY
N.º de Tramos N NUMBER OF TOWER SECTIONS N	N m	N m	N m
Altura bajo Gancho m HOISTING HEIGHT m	N m	N m	N m

* Bajar torre de montaje

LIEBHERR

CARACTERISTICAS GENERALES - TECHNICAL DATA

Mecanismos - Mechanisms

Mecanismos Mechanisms		N.º Ramales Falls	m / min.	Kg.	CV
ELEVACION HOIST GEAR			8 28 56	2.000 2.000 1.000	15
			• 4 • 14 • 28	• 4.000 • 4.000 • 2.000	• 15
GIRO SLEWING GEAR			0,85 r.p.m. s.l.m.		6
CARRO TROLLEYING GEAR			35		2
			• 15/60		• 1,25/3
TRASLACION TRAVELLING GEAR			20		4

• OPCIONAL
OPTIONAL

ESPECIFICACIONES - SPECIFICATIONS

PESO DE CONSTRUCCION DEAD WEIGHT	LASTRE DE BASE CENTRAL BALLAST	CONTRAPESO CONTRAPLUMA COUNTERWEIGHT BALLAST	CARGA MAXIMA POR ESQUINA MAX. CORNER PRESSURE
20.300 kgs.	40.600 Kgs.	8.600 Kgs.	48.500 kgs.
 TENSION 380 V - 50 Hz POTENCIA TOTAL INSTALADA 27 CV TOTAL MOTOR OUTPUT		OTRAS SOLUCIONES CONSULTAR OTHER SPECIFICATIONS ON REQUEST	

Conforme a Instrucción Técnica Complementaria MIE-AEM2 - (B.O.E. 7-7-1988)

LIEBHERR