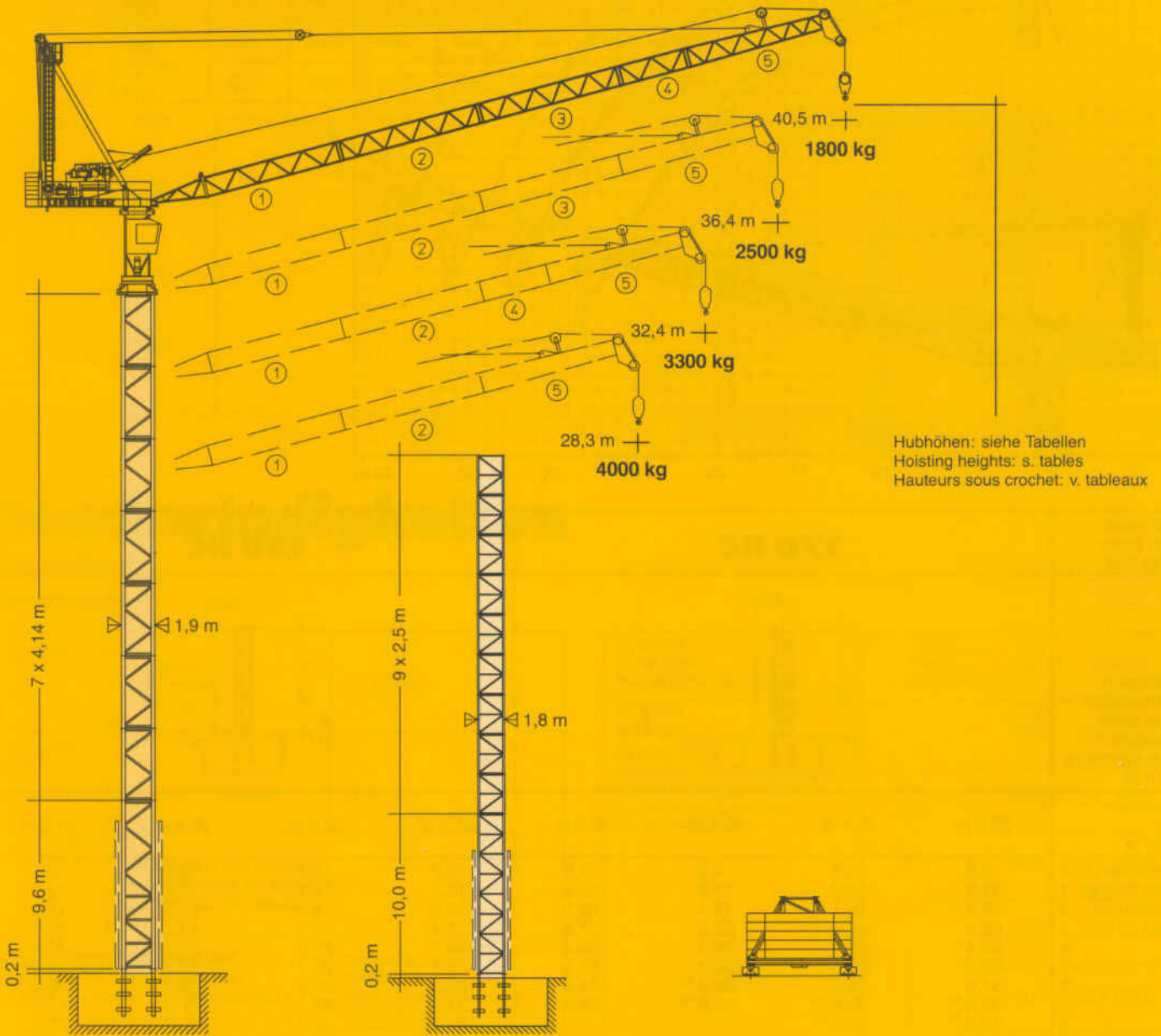


**Tower Crane
Grue à tour**

Turmdrehkran 80 HC-L



Turm 170 HC
tower / le mât
max. 82,0 m

Turm 120 HC
tower / le mât
max. 76,8 m

Unterwagen auf Anfrage.
Undercarriage on request
Châssis sur demande

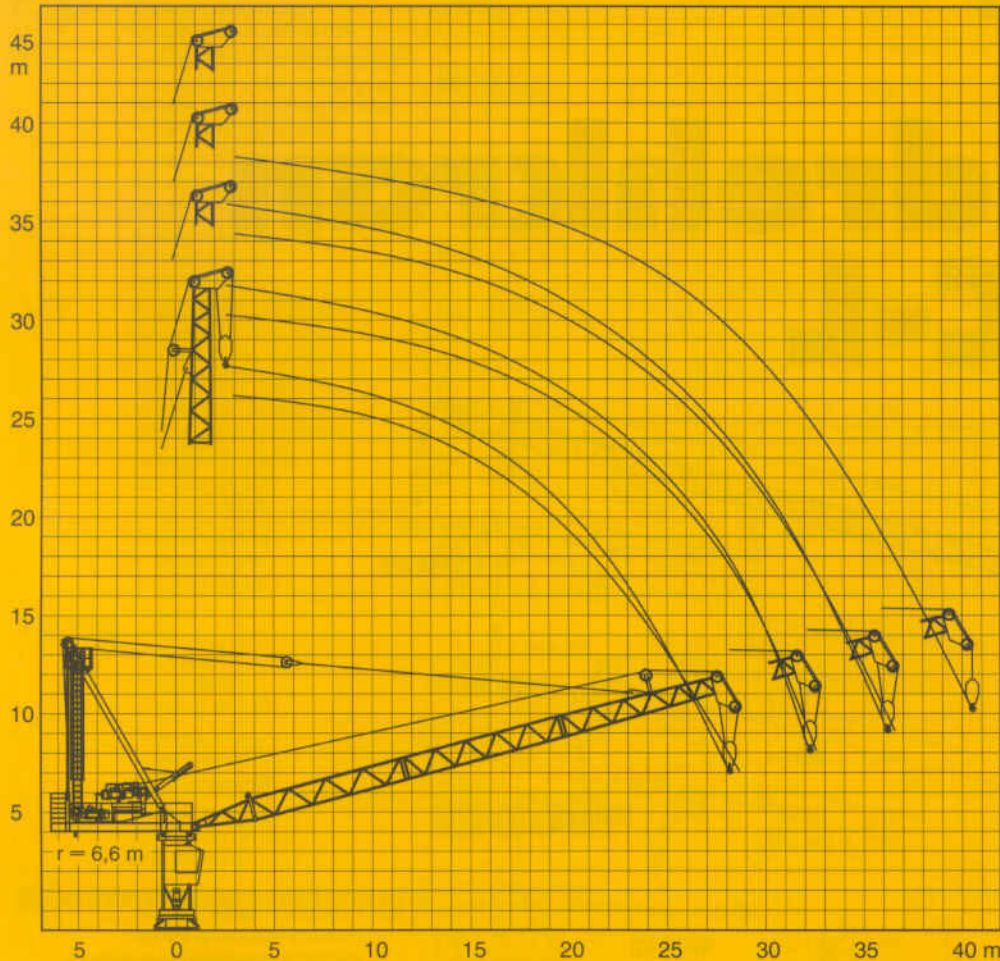
Maßstab: 1 : 365
scale / échelle

LIEBHERR

Ausladung und Hubhöhe

Radius and hoisting height

Portée et hauteur de levage



| mit Turm with tower avec mât | 170 HC | | | | 120 HC | | | | |
|--|--------------------|--------------------|--------------------|--------------------|--------------------|--------------------|--------------------|--------------------|------|
| zuzüglich Turmstücke / plus tower sections / plus éléments de mât | | | | | | | | | |
| Ausleger Jib Flèche | 28,3 m | 32,4 m | 36,4 m | 40,5 m | 28,3 m | 32,4 m | 36,4 m | 40,5 m | |
| Turmhöhen tower heights hauteurs de mât | 0 | 9,8 | 9,8 | 9,8 | 9,8 | 10,2 | 10,2 | 10,2 | 10,2 |
| 1 | 13,9 | 13,9 | 13,9 | 13,9 | 12,7 | 12,7 | 12,7 | 12,7 | |
| 2 | 18,1 | 18,1 | 18,1 | 18,1 | 15,2 | 15,2 | 15,2 | 15,2 | |
| 3 | 22,2 | 22,2 | 22,2 | 22,2 | 17,7 | 17,7 | 17,7 | 17,7 | |
| 4 | 26,4 | 26,4 | 26,4 | 26,4 | 20,2 | 20,2 | 20,2 | 20,2 | |
| 5 | 30,5 | 30,5 | 30,5 | 30,5 | 22,7 | 22,7 | 22,7 | 22,7 | |
| 6 | 34,6 | 34,6 | 34,6 ^{*x} | 34,6 ^{*x} | 25,2 | 25,2 | 25,2 | 25,2 | |
| 7 | 38,8 ^{*x} | 38,8 ^{*x} | 38,8 ^{*x} | 38,8 ^{*x} | 27,7 | 27,7 | 27,7 | 27,7 [*] | |
| 8 | 42,9 ^{*x} | 42,9 ^{*x} | — | — | 30,2 [*] | 30,2 [*] | 30,2 [*] | 30,2 ^x | |
| 9 | — | — | — | — | 32,7 ^x | 32,7 ^x | 32,7 ^x | 32,7 ^{*x} | |
| 10 | — | — | — | — | 35,2 ^x | 35,2 ^x | 35,2 ^x | — | |
| 11 | — | — | — | — | 37,7 ^{*x} | 37,7 ^{*x} | 37,7 ^{*x} | — | |

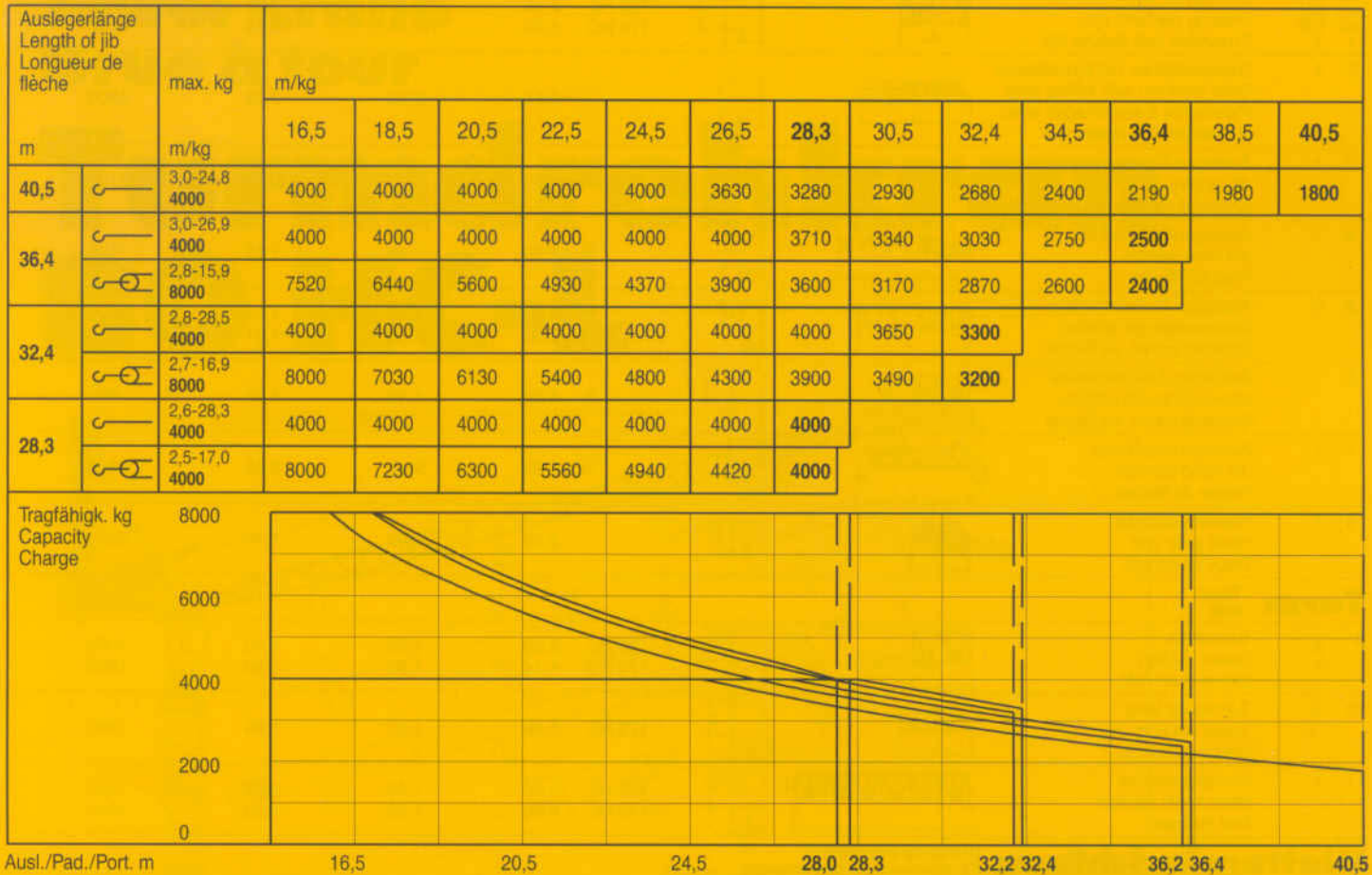
* Führungsstück nach Montage ablassen. / Lower guide section after erection. / Baissez la cage télescopique après le montage.
 x Außer Betrieb, Auslegerstellung 15°. / Out of operation, Jib position 15°. / Hors service, position de flèche 15°.

80 HC-L

Ausladung und Tragfähigkeit

Radius and capacity

Portée et charge

















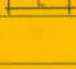





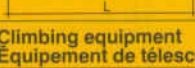
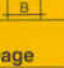


Geschwindigkeiten

Speeds /
Vitesses

| | | | | | | |
|--|---|---|---|-------------------------|--------|--------------|
| | U/min 0,8 sl./min tr./min | 1 x 5,0 kW | Hubwerk Hoist gear Mécanisme de levage | Gang Gear Rapport | kg | m/min |
| | 15" - 87" / 1,5 min | 37,5 kW | 37,5 kW WIW 260 JX 402 Elmag, WSB Hubhöhe 100,0 m (4 Lagen) Hoisting height (4 layers) Hauteur sous crochet (4 couches) | | 1 8000 | 1,4 / 21,0 |
| | Unterwagen auf Anfrage Undercarriage on request Châssis sur demande | | | | 2 3200 | 3,3 / 50,0 |
| | | | | | 3 1400 | 6,7 / 100,0 |
| Anschlußwerte Kranoberteil Power requirement, upper part Puissance requise, partie supérieure | | Hubwerk Hoist gear Mécanisme de levage 37,5 kW | | | 1 4000 | 2,8 / 42,0 |
| kW | | 80,0 | | | 2 1600 | 6,6 / 100,0 |
| kVA | | - | | | 3 500 | 13,0 / 200,0 |

Technische Daten - Technical data

Caractéristiques techniques

| Kranoberteil | | Upper part of crane Partie supérieure de grue | | L (m) | B (m) | H (m) | kg* | |
|---------------------------|---------------|--|---|---|-----------------------------|--------------|--------------|--------------|
| Pos. Item Rep. | Anz. Qty. Qte | Drehbühne kpl. Slewing platform cpl. Ensemble mât cabine cpl. |  |  | 120 HC 5,15 170 HC 5,20 | 2,44 2,44 | 2,48 2,65 | 6700 7000 |
| 2 | 1 | Getriebebühne mit Einziehwerk Gear platform with luffing gear Plateforme à enroulages avec mécanisme de relevage |  |  | 7,55 | 2,50 | 2,22 | 5900 |
| 3 | 1 | Ausleger-Abspannbock Jib gantry Chevalet de retenue de flèche |  |  | 10,70 | 2,20 | 1,60 | 2100 |
| 4 | 1 | Ausleger-Anlenkstück Jib heel section Pied de flèche |  |  | ① 11,20 | 1,46 | 1,45 | 1100 |
| 5 | 2 | Ausleger-Zwischenstück Intermediate jib section Élément intern. de flèche |  |  | ② 8,50 ③ 8,50 | 1,46 1,46 | 1,31 1,31 | 500 500 |
| 6 | 1 | Ausleger-Zwischenstück Intermediate jib section Élément intern. de flèche |  |  | ④ 4,30 | 1,46 | 1,31 | 300 |
| 7 | 1 | Ausleger-Kopfstück Jib head section Pointe de flèche |  |  | ⑤ 7,90 | 2,10 | 2,05 | 1100 |
| 8 | 1 | Hubwerkseinheit Hoist gear unit Treuil de levage |  |  | 2,50 | 1,90 | 1,70 | 2260 |
| Turm | | Tower Mât | | | | | | |
| 9 | 8 11 | Turmstück Tower section Élément de mât |  |  | 120 HC 2,50 170 HC 4,14 | 1,80 1,90 | 1,80 1,90 | 1050 1850 |
| 10 | 1 | Turmstück lang Tower section Élément de mât |  |  | 120 HC 5,00 | 1,80 | 1,80 | 1960 |
| 11 | 1 | Grundturmstück Base tower section Mât de base |  |  | 120 HC 10,00 170 HC 9,60 | 1,80 1,90 | 1,80 1,90 | 3420 4350 |
| Klettereinrichtung | | Climbing equipment Équipement de télescopage | | | | | | |
| 12 | 1 | Führungsstück kpl. Guide section cpl. Cage télescopique cpl. |  |  | 120 HC 9,60 170 HC 9,04 | 2,10 2,31 | 2,42 2,28 | 4410 4750 |
| 13 | 1 | Hydraulikanlage, Stütz- und Klettertraverse Hydraulic unit, supporting and climbing cross members Système hydraulique avec traverses d'appui et de télescopage | | | 120 HC 2,00 170 HC 2,00 | 2,12 1,10 | 1,06 1,00 | 1050 1100 |

* Einzelgewichte. Montagegewichte: siehe Betriebsanweisung. / Single weights. Erection weights: see instruction manual. / Poids individuels. Poids de montage: voir manuel de service.