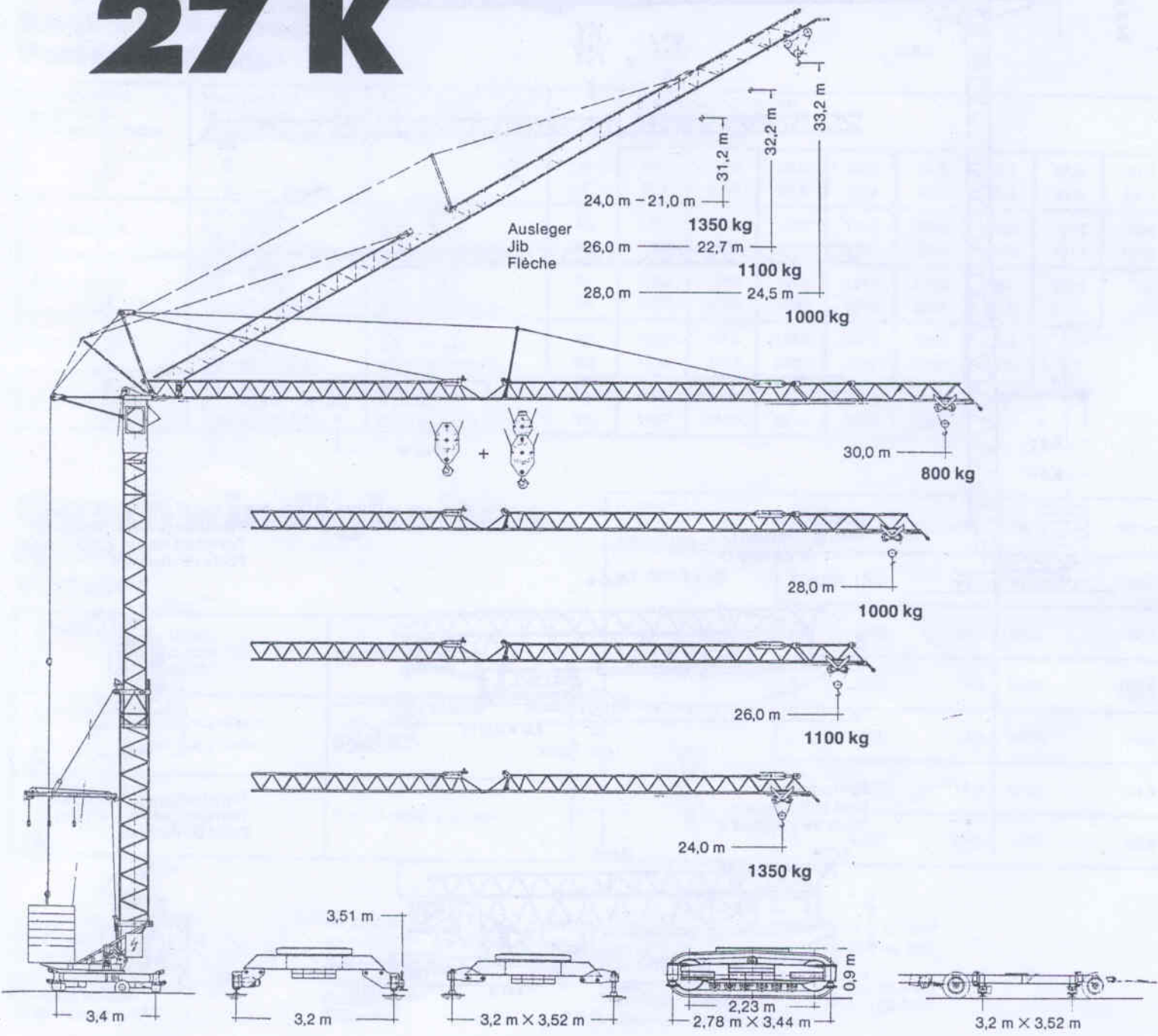
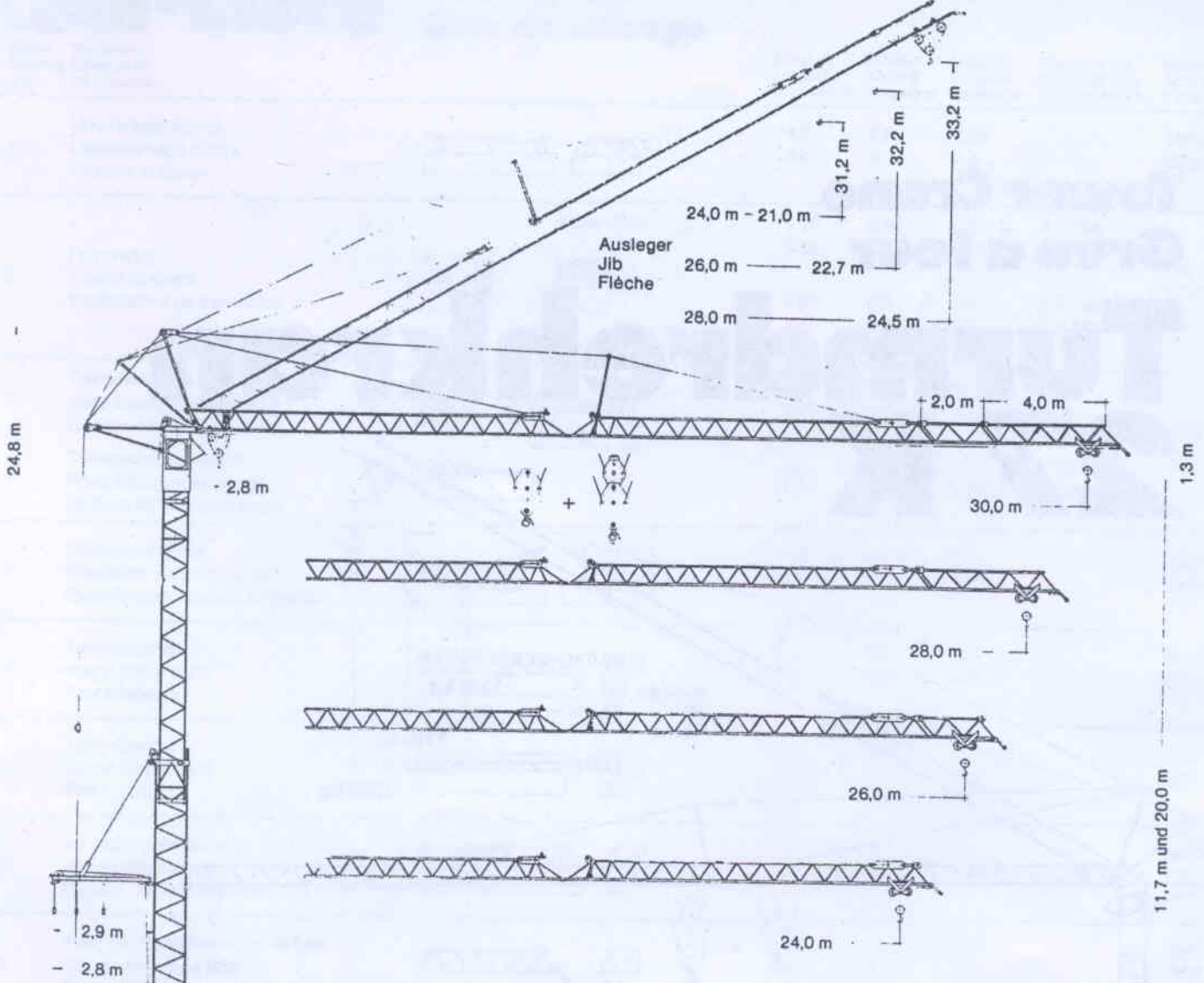


**Tower Crane
Grue à tour**

Turmdrehkran 27 K

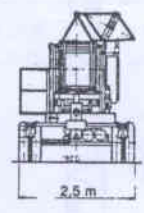
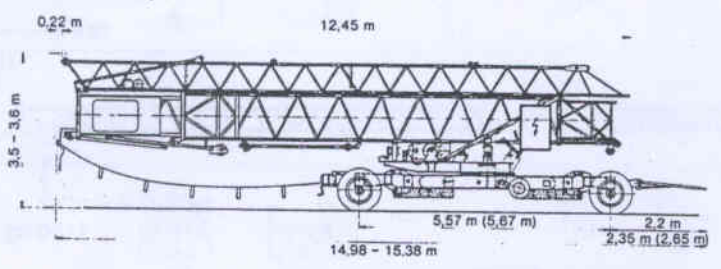


LIEBHERR



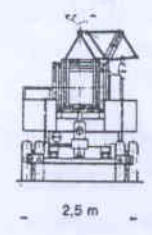
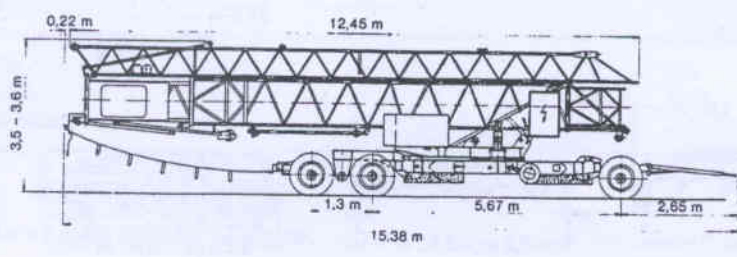
Rüstzustand I
Kind of transport I
Mode de transport I

Transportgewicht 15000 kg
Transport weight 32000 lbs
Poids de transport



Rüstzustand II
Kind of transport II
Mode de transport II

Transportgewicht 19000 kg
Transport weight 41600 lbs
Poids de transport



27 K

Gewicht

Weight

Poids



Max. Ecklast in Betrieb Max. corner pressure in operation Réaction max. par angle en service	17251 kg 38038 lbs
Max. Ecklast außer Betrieb Max. corner pressure out of operation Réaction max. par angle hors service	10272 kg 22650 lbs
Zentralballast ca. Central ballast approx. Lest-fixe de chassis env.	2600 kg 5720 lbs

Gegengewicht ca. Counter weight approx. Contrepoids env.	14000 kg 30870 lbs
Konstruktionsgewicht Dead weight Poids de la construction	9850 kg 21720 lbs

Ausladung und Traglast

Radius and capacity

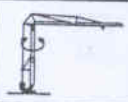
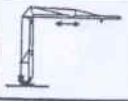
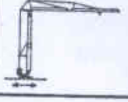
Portée et charge



Auslegerlänge Length of jib Longueur de flèche	Max. Traglast Max. capacity Charge max.		Max. Traglast Max. capacity Charge max.		m ft	Ausladung und Traglast Radius and capacity Portée et charge									
						16,0 52.5	18,0 59.0	20,0 65.6	22,0 72.2	24,0 78.7	26,0 85.3	28,0 91.8	30,0 98.4		
30,0 m/98.4 ft	2,8 - 18,0 m 9.2 - 59.0 ft 1500 kg/3300 lbs		2,8 - 10,2 m 9.2 - 33.4 ft 3000 kg/6600 lbs		kg lbs	1730 3806	1500 3300	1320 2904	1175 2585	1055 2320	955 2100	870 1914	800 1760		
28,0 m/91.8 ft	2,8 - 20,0 m 9.2 - 65.6 ft 1500 kg/3300 lbs		2,8 - 11,3 m 9.2 - 37.0 ft 3000 kg/6600 lbs		kg lbs	1965 4323	1705 3750	1500 3300	1340 2948	1205 2651	1095 2409	1000 2200			
26,0 m/85.3 ft	2,8 - 20,1 m 9.2 - 65.9 ft 1500 kg/3300 lbs		2,8 - 11,3 m 9.2 - 37.0 ft 3000 kg/6600 lbs		kg lbs	1975 4345	1715 3773	1510 3322	1345 2959	1210 2662	1100 2420				
24,0 m/78.7 ft	2,8 - 22,0 m 9.2 - 72.2 ft 1500 kg/3300 lbs		2,8 - 12,3 m 9.2 - 40.3 ft 3000 kg/6600 lbs		kg lbs	2185 4807	1900 4180	1675 3685	1500 3300	1350 2970					

Geschwindigkeiten

Speeds

Vitesses

	U/min 0-1 sl./min tr./mn	2,2 kW/3.0 HP
	18,0/ 36,0 m/min 59.0/118.0 ft/min	1,0/1,45 kW 1.36/2.0 HP
	25,0 m/min 82.0 ft/min	2 x 1,5 kW/2 x 2.0 HP

Hubwerk Hoist gear Mécanisme de levage	Gang Gear Boîte	kg	m/min	lbs	ft/min
	1	1500	6,0	3300	20,0
	2	1500	27,0	3300	88.6
	3	1000	55,0	2200	180.0
	1	3000	3,0	6600	10.0
	2	3000	13,5	6600	44.3
	3	2000	27,0	4400	88.6

Kabelquerschnitt bei 380 V
Cross section of cable 380 V
Section of câble à 380 V

Betriebsspannung 380 V
Operating voltage
Tension de service

bis 20,0 m 4 x 6 mm²
up to 65.0 ft 4 x 0.0093 sq. inch
jusqu'à 20,0 m

Frequenz 50 Hz
Frequency
Fréquence

bis 28,0 m 4 x 10 mm²
up to 92.0 ft 4 x 0.015 sq. inch
jusqu'à 28,0 m



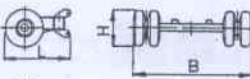
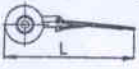
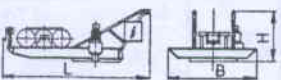
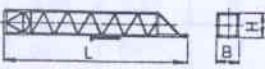
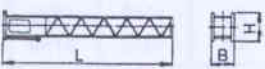
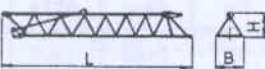




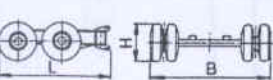
Gesamtmotorenleistung 16,4 kW
Total motor output 22.3 HP
Puissance totale des moteurs

Technische Daten - Technical data

Caractéristiques techniques

KoLLi-Liste

Packing List Liste de colisage

Pos. em	Anzahl Quantity	Benennung Description		Länge m Length ft Longueur m	Breite m Width ft Largeur m	Höhe m Height ft Hauteur m	Einzelgew. kg Unit weight lbs Poids unitaire kg	Gesamtgew. kg Total weight lbs Poids total kg
1	1	Unterwagen kompl. Undercarriage compl. Chassis complet		4,2 13.8	2,5 8.2	0,55 1.8		1800 3960
2	4	Fahrwerke Travelling gears Mécanismes de translation		0,95 3.12	0,65 2.13	0,4 1.31	2 x 240 2 x 528	800 1760
			angetrieben					
			nicht angetrieben					
3	1	Transportachse hinten Road transport axle behind Essieux de transport arrière		1,3 4.26	2,5 8.2	1,0 3.28	1150 2535	1870 4125
4	1	Transportachse vorne Road transport axle front Essieux de transport avant		2,3 7.54	2,1 6.89	1,0 3.28	720 1590	
5	1	Drehbühne kompl. Revolving platform compl. Plate-forme tournante complète		4,0 13.1	1,6 5.25	1,8 5.9		2050 4510
6	1	Turm-Unterteil Tower (lower part) Tour inférieure		10,0 32.8	1,0 3.28	1,3 4.27		1650 3630
7	1	Turm-Oberteil Tower (upper part) Tour supérieure		12,4 40.6	0,95 3.12	1,2 3.94		1560 3432
3	1	Ausleger-Anlenkstück Jib pivoting section Élément de pied de flèche		12,3 40.35	1,1 3.6	0,8 2.62		800 1760
3	1	Ausleger-Kopfstück Jib head piece Pointe de flèche		11,7 38.4	0,8 2.62	0,75 2.46		320 704
1	1	Ausleger-Verlängerung 2,0 m Jib extension Rallonge de la flèche		2,5 6.56	0,8 2.62	0,7 2.3	2 x 60 2 x 132	65 143
1	1	Ausleger-Verlängerung 4,0 m Jib extension Rallonge de la flèche		4,5 14.7	0,88 2.62	0,7 2.3	1 x 115 1 x 253	115 253
1	1	Laufkatze kompl. Trolley compl. Chariot distributeur compl.		0,9 2.95	0,95 3.12	0,6 1.97		100 220
1	1	Transportachse Tra 200 Road transport axle Tra 200 Essieux de transport Tra 200		3,1 10.17	2,5 8.2	2,0 3.28		(2600) (5720)
1	1	Kiste mit Seilen und Kleinteilen Case with ropes and small parts Caisse avec câbles et pièces détachées		1,0 3.28	0,8 2.62	1,0 3.28		630 1386

Blatt Nr. 120 P - 1953 - DIN 15018 H 1 B 3 und OENORM T 3 - 1. 79
Data sheet
Fiche de caractéristiques

Konstruktionsänderungen vorbehalten!
Subject to alterations!
Sous réserves de modifications!

Printed in Fed. Rep. of Germany

Bitte nehmen Sie Kontakt auf mit
Please contact
Veuillez vous en rapporter avec
IEBHERR-WERK BIBERACH GMBH, Postfach 620, D-7950 Biberach an der Riß 1,
Telefon (07351) 41-1, Telex 71802