

**Tower Crane / Grue à tour / Gru a torre  
Grúa torre / Guindaste de torre**

# Turmdrehkran 27 TT

**27-45 mt**

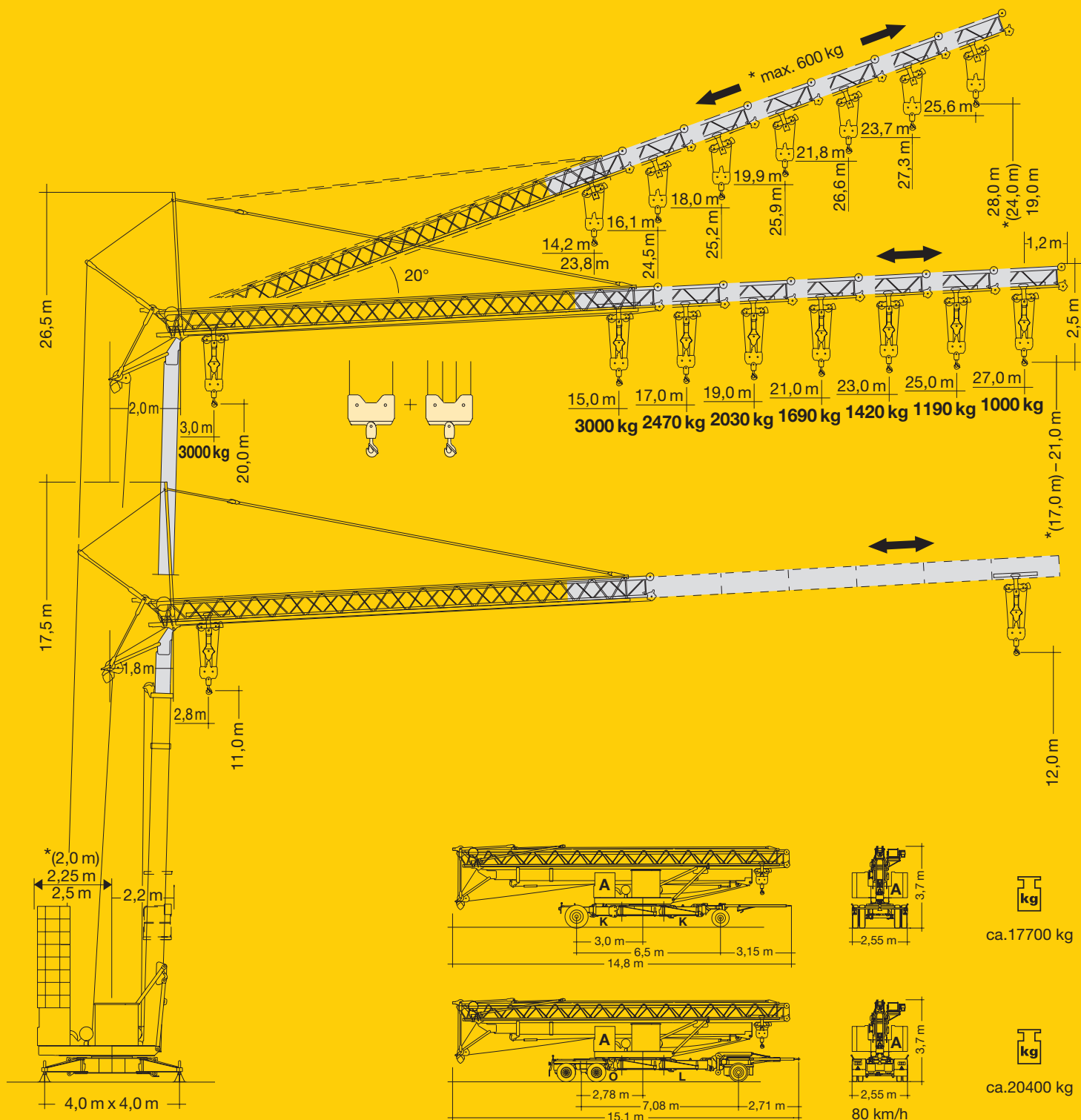


**DIN/FEM**

1 : 170

CD-1

# LIEBHERR



# Gewicht

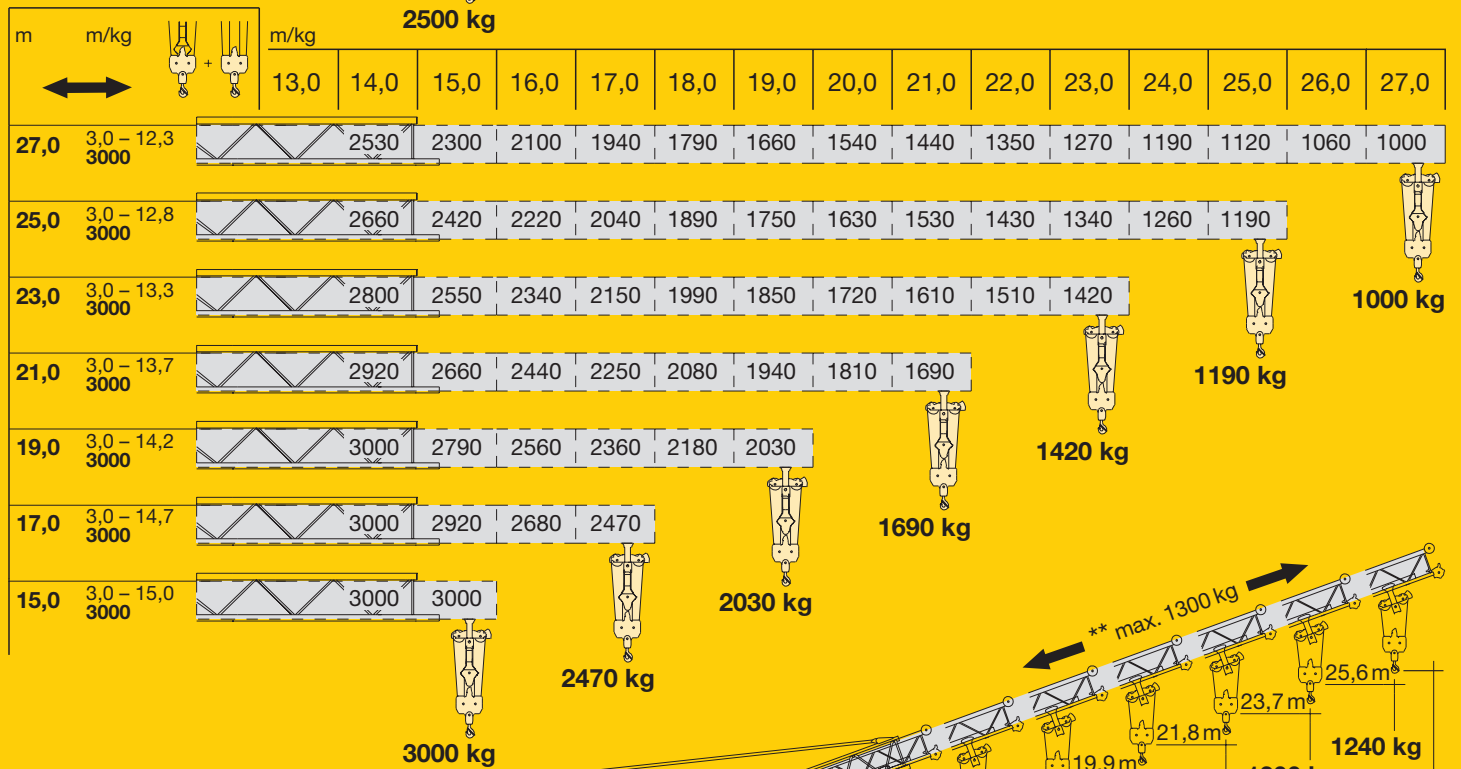
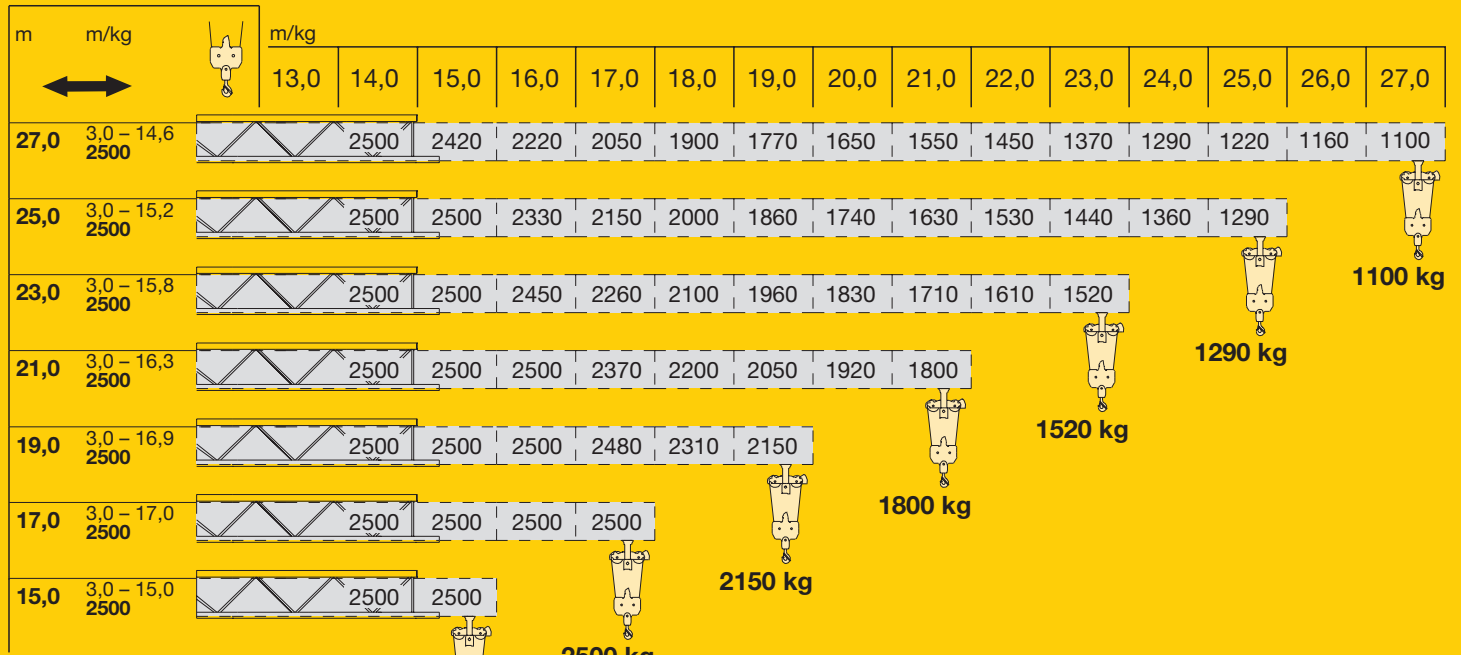
Weight / Poids / Peso / Peso / Pesos

	1 x A = 4000 kg	17320 kg	r = 2,5 m		ca. 11000 kg
	8 x B = 13320 kg				
	1 x A = 4000 kg	18985 kg	r = 2,25 m		
	9 x B = 14985 kg				

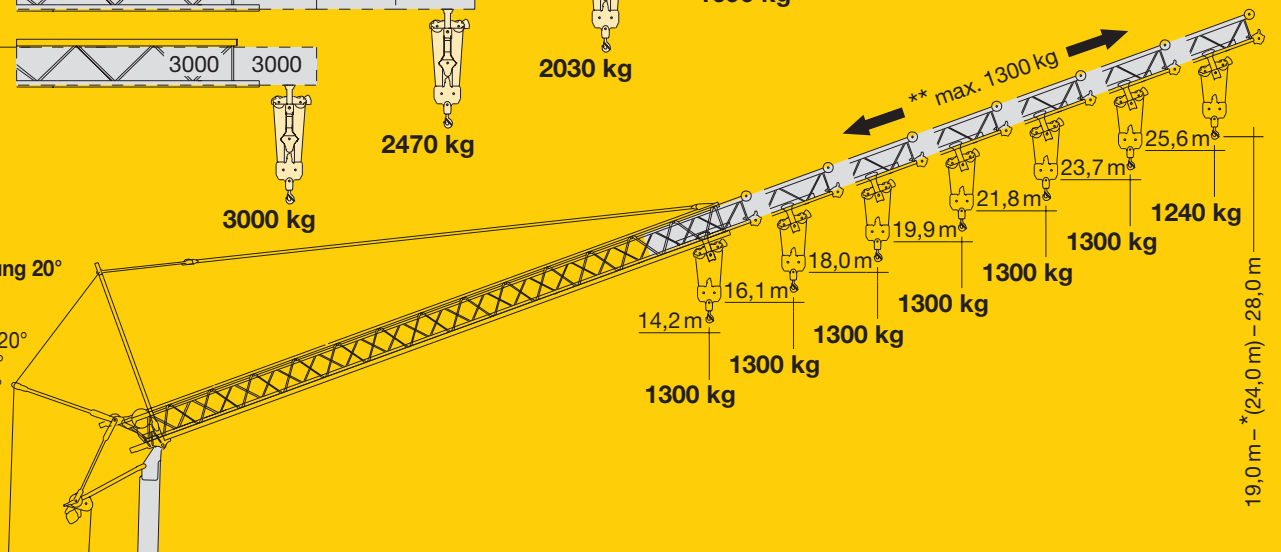
\* ( ) siehe Betriebsanweisung. / see instruction manual. / voir manuel de service. / vedi manuale d'istruzione. / ver manual de instrucción. / ver manual de instruções.

# Ausladung und Tragfähigkeit

Radius and capacity / Portée et charge / Sbraccio e portata / Alcances y cargas / Alcance e capacidade de carga







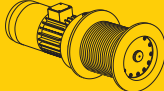

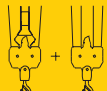

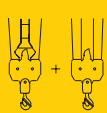
Auslegersteilstellung 20°  
Elevated jib 20°  
Flèche inclinée 20°  
Braccio inclinato a 20°  
Pluma inclinada 20°  
Lança inclinada 20°




# Geschwindigkeiten

Speeds / Vitesses / Velocità / Velocidades / Velocidades


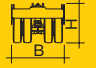

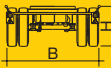
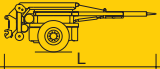
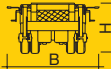

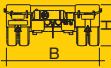
	U/min. 0 ↔ 0,8 sl./min tr./min	1,5 kW, EDC
	20,0 / 40,0 m/min	1,8 / 3,5 kW (20°)* 2,6 / 3,5 kW (20°)**
	10,0 m/min	1,8 kW 2,6 kW (20°)
	4,0 m/min	5,0 kW

	Stufe / Step / Cran Marcia / Velocidad Velocidade	kg	m/min	
11,0 kW (KL) 	1	2500	5,0	
	2	2500	20,0	
	3	1300	40,0	
11,0 kW (FU) 	1	1500 3000	5,0 2,5	
	2	1500 3000	20,0 10,0	
	3	1300 2600	40,0 20,0	
	11,0 kW (FU) 	1	2500	4,0
		2	2500	20,0
		3	1300	38,0
4		1000	50,0	
	1	1500 3000	4,0 2,0	
	2	1500 3000	20,0 10,0	
	3	1300 2600	38,0 19,0	
	4	1000 2000	50,0 25,0	

	400 V	Hz	kVA
55,0 m 85,0 m	4 x 6 mm <sup>2</sup> (KL) 4 x 6 mm <sup>2</sup> (FU)	50	20,0 (KL) 18,0 (FU)

## Kolli-Liste

Packing List / Liste de colisage / Lista dei colli / Lista de contenido / Lista de embalagem

Pos. Item Rep. Voce Pos. Ref.	Anz. Qty. Qte Qta. Cant. Cant.		L (m)	B (m)	H (m)	kg		
1	1	<b>Transportachse vorne Tra 100 KY 2</b> Road transport axle front / Essieux de transport arrière / Asse di trasporto anteriore / Eje delantero para transporte / Eixo de transporte dianteiro			4,10	1,42	1,10	750
2	1	<b>Transportachse hinten Tra 120 GY 1A</b> Road transport axle behind / Essieux de transport arrière / Asse di trasporto posteriore / Eje trasero para transporte / Eixo de transporte traseiro			1,70	2,50	1,10	1100
3	1	<b>Transportachse vorne Tra 115</b> Road transport axle front / Essieux de transport arrière / Asse di trasporto anteriore / Eje delantero para transporte / Eixo de transporte dianteiro			4,10	2,50	1,32	1900
4	1	<b>Transportachse hinten Tra 117 GY 1A</b> Road transport axle behind / Essieux de transport arrière / Asse di trasporto posteriore / Eje trasero para transporte / Eixo de transporte traseiro			1,80	2,50	1,10	1500
5	1	<b>Transportachse hinten Tra 203</b> Road transport axle behind / Essieux de transport arrière / Asse di trasporto posteriore / Eje trasero para transporte / Eixo de transporte traseiro			3,0	2,50	1,05	2500

CD 

## Technische Daten

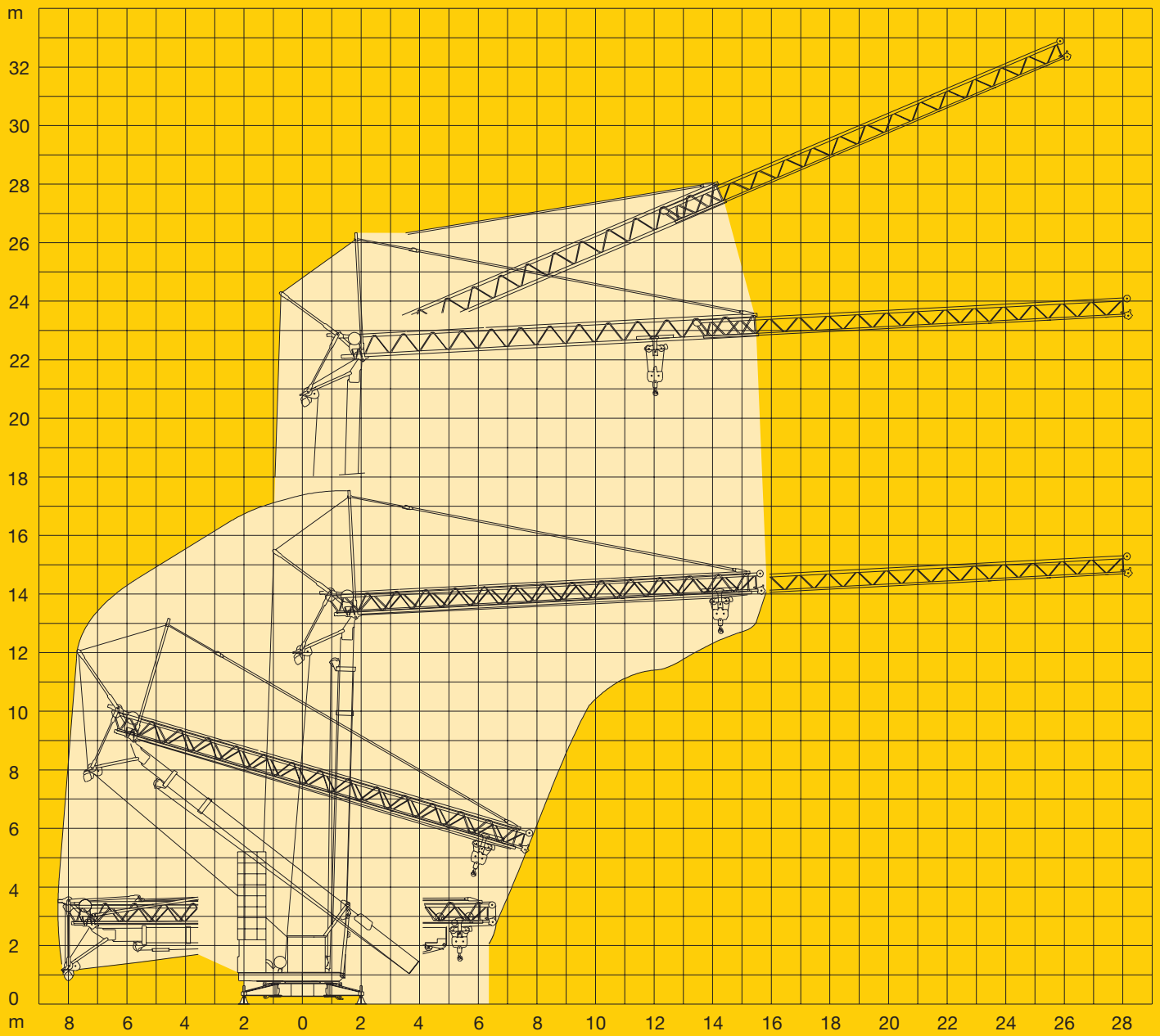
Technical data - Caractéristiques techniques

Caratteristiche tecniche - Características técnicas - Datos técnicos

# Aufstellvorgang

Erection procedure / Déroulement de montage / Procedimento di montaggio

Procedimiento de montaje / Sistema de montagem



**120 P –4320 H1 B3 DIN 15018 •BGL 2105-0028 / FEM (Section 1) Krangruppe A3 und OENORM T3 •03.01 / 6**

Konstruktionsänderungen vorbehalten! / Subject to alterations!  
Sous réserves de modifications! / Si fa riserva di modifiche!  
Salvo modificação da construação! / Sujeto a modificaciones!

Printed in Germany.



**LIEBHERR-WERK BIBERACH GMBH, Postfach 1663, D-88396 Biberach an der Riß  
☎ (0 73 51) 41-0, Fax (0 73 51) 41 22 25, [www.lbc.liebherr.de](http://www.lbc.liebherr.de), E-Mail: [info@lbc.liebherr.com](mailto:info@lbc.liebherr.com)**